

DESCRIPTION

| | |
|---------------------|---|
| Specificity | Detects N-terminal and C-terminal HA-tagged proteins in Western blot. |
| Source | Recombinant Monoclonal Rabbit IgG Clone # 1049F |
| Purification | Protein A or G purified from cell culture supernatant |
| Immunogen | HA Tag peptide Accession # ABB51961 |
| Formulation | Supplied as a solution in PBS containing BSA, Glycerol and Sodium Azide. See Certificate of Analysis for details. *Small pack size (-SP) is supplied as a 0.2 µm filtered solution in PBS. |

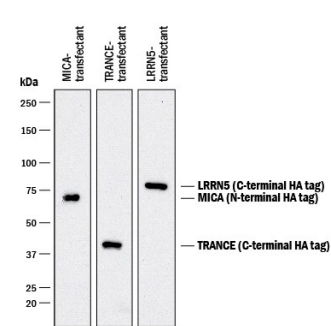
APPLICATIONS

Please Note: Optimal dilutions should be determined by each laboratory for each application. *General Protocols* are available in the *Technical Information* section on our website.

| | Recommended Concentration | Sample |
|----------------------------|----------------------------------|--|
| Western Blot | 0.1 µg/mL | See Below |
| Immunocytochemistry | 8-25 µg/mL | See Below |
| Immunoprecipitation | 1-4 µg/100 µg cell lysate | HEK293 human embryonic kidney cell line transfected with C-terminal HA-tagged LRRN5 and N-terminal HA-tagged MICA, see our available Western blot detection antibodies . |
| Simple Western | 1 µg/mL | See Below |

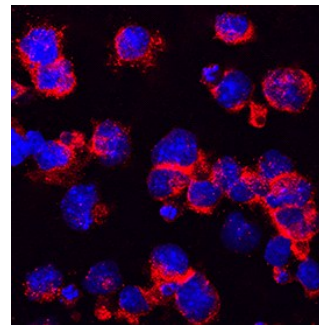
DATA

Western Blot



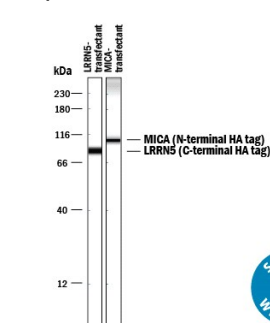
Detection of HA-tagged proteins by Western Blot. Western blot shows lysates of HEK293 human embryonic kidney cell line transfected with N-terminal HA-tagged MICA, C-terminal HA-tagged TRANCE, and C-terminal HA-tagged LRRN5. PVDF membrane was probed with 0.1 µg/mL of Rabbit Anti-HA Monoclonal Antibody (Catalog # MAB0601) followed by HRP-conjugated Anti-Rabbit IgG Secondary Antibody (Catalog # HAF008). Specific bands were detected for HA-tagged proteins at approximately 70 kDa, 40 kDa, and 77 kDa (as indicated). This experiment was conducted under reducing conditions and using Immunoblot Buffer Group 1.

Immunocytochemistry



HA Tag in NS0 Mouse Cell Line. HA was detected in immersion fixed NS0 mouse myeloma cell line transfected with HA-tagged WISP-2 using Rabbit Anti-HA Monoclonal Antibody (Catalog # MAB0601) at 3 µg/mL for 3 hours at room temperature. Cells were stained using the NorthernLights™ 557-conjugated Anti-Rabbit IgG Secondary Antibody (red; Catalog # NL004) and counterstained with DAPI (blue). Specific staining was localized to cytoplasm. View our protocol for [Fluorescent ICC Staining of Non-adherent Cells](#).

Simple Western



Detection of HA-tagged proteins by Simple Western™. Simple Western lane view shows lysates of HEK293 human embryonic kidney cell line transfected with C-terminal HA-tagged LRRN5 and N-terminal HA-tagged MICA, loaded at 0.1 mg/mL. Specific bands were detected for HA-tagged proteins at approximately 87 and 106 kDa (as indicated) using 1 µg/mL of Rabbit Anti-HA Monoclonal Antibody (Catalog # MAB0601). This experiment was conducted under reducing conditions and using the 12-230 kDa separation system.

PREPARATION AND STORAGE

| | |
|--------------------------------|---|
| Shipping | The product is shipped with polar packs. Upon receipt, store it immediately at the temperature recommended below. *Small pack size (-SP) is shipped with polar packs. Upon receipt, store it immediately at -20 to -70 °C |
| Stability & Storage | Use a manual defrost freezer and avoid repeated freeze-thaw cycles. <ul style="list-style-type: none"> ● 12 months from date of receipt, -20 to -70 °C, as supplied. ● 1 month, 2 to 8 °C under sterile conditions after opening. ● 6 months, -20 to -70 °C under sterile conditions after opening. |

PRODUCT SPECIFIC NOTICES

* Contains <0.1% Sodium Azide, which is not hazardous at this concentration according to GHS classifications. Refer to SDS for additional information and handling instructions.