

**DESCRIPTION**

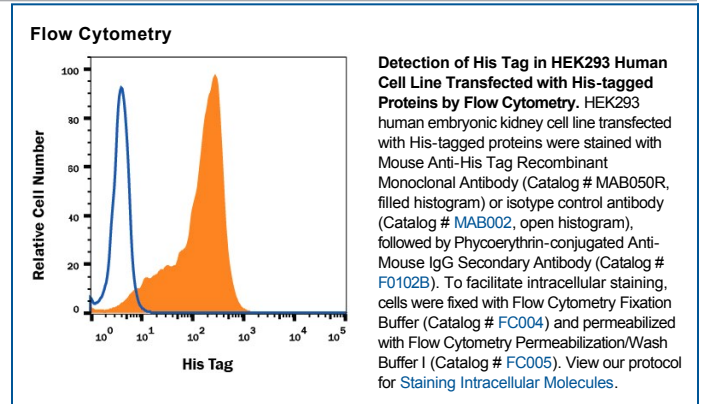
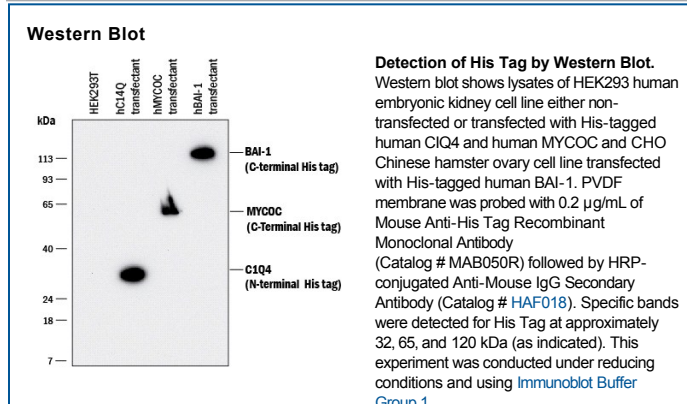
<b>Specificity</b>	Detects proteins containing accessible consecutive histidine regions. The antibody detects His tags located at the amino- or carboxyl-terminus.
<b>Source</b>	Recombinant Monoclonal Mouse IgG <sub>1</sub> Clone # AD1.1.10R
<b>Purification</b>	Protein A or G purified from cell culture supernatant
<b>Immunogen</b>	His-tagged peptide
<b>Formulation</b>	Supplied as a solution in PBS. See Certificate of Analysis for details. *Small pack size (-SP) is supplied as a 0.2 µm filtered solution in PBS.

**APPLICATIONS**

**Please Note:** Optimal dilutions should be determined by each laboratory for each application. *General Protocols* are available in the *Technical Information* section on our website.

	<b>Recommended Concentration</b>	<b>Sample</b>
<b>Western Blot</b>	0.2 µg/mL	See Below
<b>Flow Cytometry</b>	0.25 µg/10 <sup>6</sup> cells	See Below
<b>Immunoaffinity Purification</b>	Immobilized anti-His antibody can be used to affinity purify proteins containing exposed His tags. The column capacity must be determined for each individual His-tagged protein.	

**DATA**



**PREPARATION AND STORAGE**

<b>Shipping</b>	The product is shipped with polar packs. Upon receipt, store it immediately at the temperature recommended below. *Small pack size (-SP) is shipped with polar packs. Upon receipt, store it immediately at -20 to -70 °C
<b>Stability &amp; Storage</b>	<b>Use a manual defrost freezer and avoid repeated freeze-thaw cycles.</b> <ul style="list-style-type: none"> <li>● 12 months from date of receipt, -20 to -70 °C, as supplied.</li> <li>● 1 month, 2 to 8 °C under sterile conditions after opening.</li> <li>● 6 months, -20 to -70 °C under sterile conditions after opening.</li> </ul>