

## DESCRIPTION

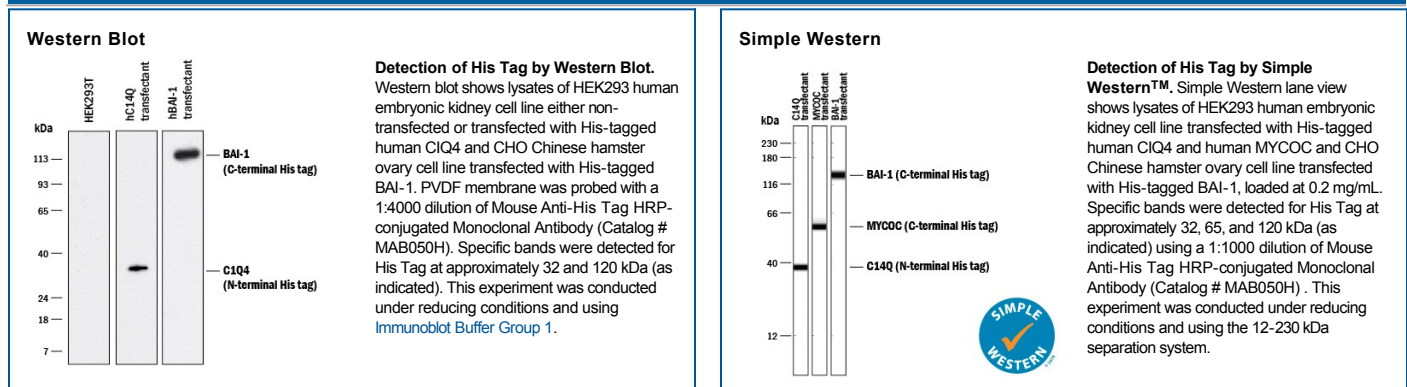
<b>Specificity</b>	Detects proteins containing accessible consecutive histidine regions. The antibody detects His tags at the amino- or carboxyl-terminus.
<b>Source</b>	Monoclonal Mouse IgG <sub>1</sub> Clone # AD1.1.10
<b>Purification</b>	Protein A or G purified from hybridoma culture supernatant
<b>Immunogen</b>	His-tagged peptide
<b>Formulation</b>	Supplied as a 0.2 µm filtered solution in Sodium Phosphate and Proclin 300. See Certificate of Analysis for details. *Small pack size (-SP) is supplied as a 0.2 µm filtered solution in PBS.

## APPLICATIONS

**Please Note:** Optimal dilutions should be determined by each laboratory for each application. *General Protocols* are available in the *Technical Information* section on our website.

	<b>Recommended Concentration</b>	<b>Sample</b>
<b>Western Blot</b>	1:4000 dilution	See Below
<b>Simple Western</b>	1:1000 dilution	See Below

## DATA



## PREPARATION AND STORAGE

<b>Shipping</b>	The product is shipped with polar packs. Upon receipt, store it immediately at the temperature recommended below. *Small pack size (-SP) is shipped with polar packs. Upon receipt, store it immediately at -20 to -70 °C
<b>Stability &amp; Storage</b>	<b>Do not freeze.</b> <ul style="list-style-type: none"> <li>● 6 months from date of receipt, 2 to 8 °C as supplied.</li> <li>● 6 months, 2 to 8 °C under sterile conditions after opening.</li> </ul>