

DESCRIPTION

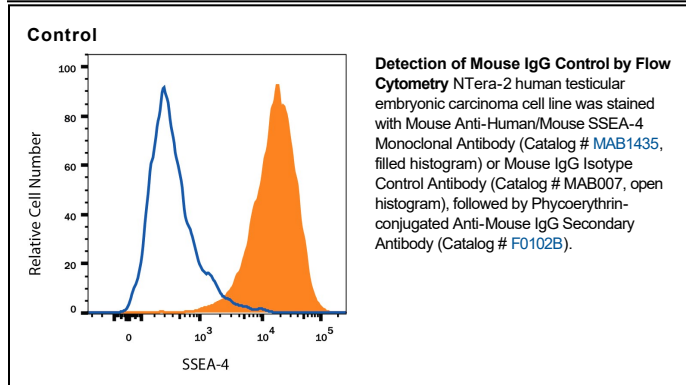
Specificity	Selected for use as a mouse IgG ₃ isotype control. Recognizes KLH.
Source	Monoclonal Mouse IgG ₃ Clone # 133316
Purification	Protein A or G purified from hybridoma culture supernatant
Immunogen	KLH
Endotoxin Level	<0.10 EU per 1 µg of the antibody by the LAL method.
Formulation	Lyophilized from a 0.2 µm filtered solution in TBS with Trehalose. See Certificate of Analysis for details. *Small pack size (-SP) is supplied either lyophilized or as a 0.2 µm filtered solution in PBS.

APPLICATIONS

Please Note: Optimal dilutions should be determined by each laboratory for each application. *General Protocols* are available in the *Technical Information* section on our website.

Negative control for use in conjunction with R&D Systems antibodies. Use at the same concentration as the detection antibody.

DATA



PREPARATION AND STORAGE

Reconstitution	Reconstitute at 0.5 mg/mL in sterile PBS.
Shipping	The product is shipped at ambient temperature. Upon receipt, store it immediately at the temperature recommended below. *Small pack size (-SP) is shipped with polar packs. Upon receipt, store it immediately at -20 to -70 °C
Stability & Storage	Use a manual defrost freezer and avoid repeated freeze-thaw cycles. <ul style="list-style-type: none"> ● 12 months from date of receipt, -20 to -70 °C as supplied. ● 1 month, 2 to 8 °C under sterile conditions after reconstitution. ● 6 months, -20 to -70 °C under sterile conditions after reconstitution.