

DESCRIPTION

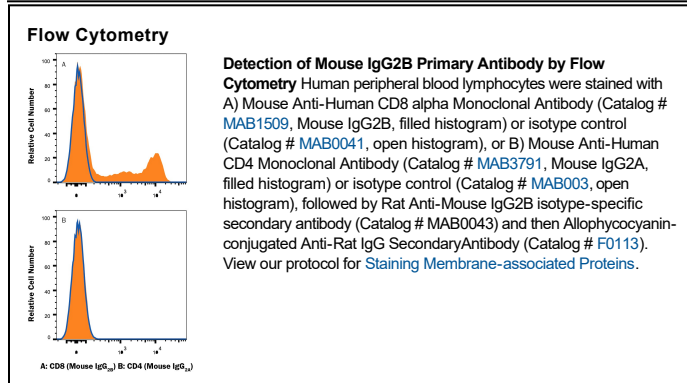
Species Reactivity	Mouse
Specificity	The specificity of this antibody was confirmed by direct ELISA on mouse IgG _{2B} monoclonal antibodies, and it does not cross-react with IgG ₁ , IgG _{2A} , IgG ₃ , IgM, IgA, or IgE antibodies. By flow cytometry, this isotype-specific secondary antibody detects primary antibodies of the mouse IgG _{2B} isotype, and does not detect primary antibodies of mouse IgG ₁ , IgG _{2A} , or IgG ₃ class.
Source	Monoclonal Rat IgG ₁ Clone # 332723
Purification	Protein A or G purified from hybridoma culture supernatant
Immunogen	Cocktail of mouse IgG _{2B} and IgG ₃
Formulation	Lyophilized from a 0.2 µm filtered solution in PBS with Trehalose. See Certificate of Analysis for details. *Small pack size (-SP) is supplied either lyophilized or as a 0.2 µm filtered solution in PBS.

APPLICATIONS

Please Note: Optimal dilutions should be determined by each laboratory for each application. *General Protocols* are available in the *Technical Information* section on our website.

	Recommended Concentration	Sample
Flow Cytometry	0.25 µg/10 ⁶ cells	See Below

DATA



PREPARATION AND STORAGE

Reconstitution	Reconstitute at 0.5 mg/mL in sterile PBS.
Shipping	The product is shipped at ambient temperature. Upon receipt, store it immediately at the temperature recommended below. *Small pack size (-SP) is shipped with polar packs. Upon receipt, store it immediately at -20 to -70 °C
Stability & Storage	Use a manual defrost freezer and avoid repeated freeze-thaw cycles. <ul style="list-style-type: none"> ● 12 months from date of receipt, -20 to -70 °C as supplied. ● 1 month, 2 to 8 °C under sterile conditions after reconstitution. ● 6 months, -20 to -70 °C under sterile conditions after reconstitution.