

DESCRIPTION

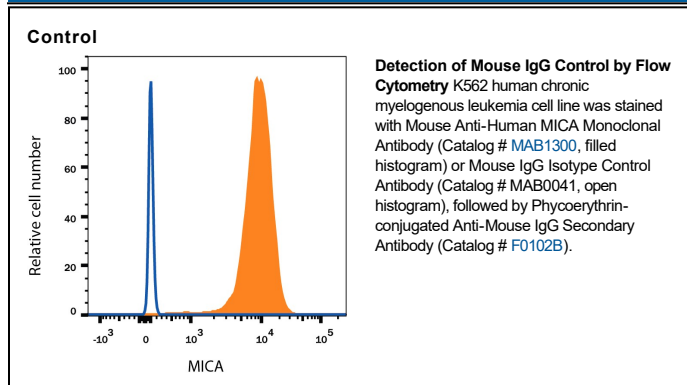
Specificity	Detects KLH. Does not cross-react with recombinant human (rh) 6Ckine, recombinant mouse (rm) 6Ckine, rhALP, rhBLC/BCA-1, rmBLC, rmC10, rhCCL28, rmCCL28, recombinant rat (rr) GINC-1, rrCINC-2 α , rrCINC-2 β , rrCINC-3, rhCK β 8-1, rmC-TACK, recombinant viral (rv) CMV UL146, rvCMV UL147, rmCRG-2, rhCXCL16, rmCXCL16, rhCXC-X3, rmCXC-X3, rhENA-78, rhEotaxin, rmEotaxin, rhEotaxin-2, rmEotaxin-2, rhEotaxin-3, rhFractalkine, rmFractalkine, rrFractalkine, rhGCP-2, rmGCP-2, rhGRO α , rhGRO β , rhGRO γ , rhHCC-1, rhHCC-4, rhl-309, rhIL-8, recombinant porcine IL-8, recombinant cotton rat (rcr) IP-10, rhIP-10, rhl-TAC, rml-TAC, rmJE, rmKC, rhLeukotactin-1, rrLIX, rmLungkine, rhLymphotactin, rmLymphotactin, rmMARC, rhMCP-1, rhMCP-2, rmMCP-2, rhMCP-3, rhMCP-4, rmMCP-5, rvMCV type 2, rhMDC, rmMDC, rhMIG, rmMIG, rcrMIP-1 α , rhMIP-1 α , rmMIP-1 α , rcrMIP-1 β , rhMIP-1 β , rmMIP-1 β , rhMIP-1 δ , rmMIP-1 γ , rmMIP-2, rhMIP-3 α , rmMIP-3 α , rrMIP-3 α , rhMIP-3 β , rmMIP-3 β , rvMIP-I, rvMIP-II, rvMIP-III, rhMPIF-1, rhNAP-2, rhPARC, rhPF4, rmPF4, rcrRANTES, rhRANTES, rmRANTES, rhSDF-1 α , rmSDF-1 α , rhSDF-1 β , rhTARC, rmTARC, rmTCA-3, rhTeck, rmTeck, or rmThymus CK1.
Source	Monoclonal Mouse IgG _{2B} Clone # 133303
Purification	Protein A or G purified from hybridoma culture supernatant
Immunogen	KLH
Endotoxin Level	<0.10 EU per 1 μ g of the antibody by the LAL method.
Formulation	Lyophilized from a 0.2 μ m filtered solution in PBS with Trehalose. See Certificate of Analysis for details. *Small pack size (-SP) is supplied either lyophilized or as a 0.2 μ m filtered solution in PBS.

APPLICATIONS

Please Note: Optimal dilutions should be determined by each laboratory for each application. General Protocols are available in the Technical Information section on our website.

Negative control for flow cytometry experiments. Use at the same concentration as the detection antibody.

DATA



PREPARATION AND STORAGE

Reconstitution	Reconstitute at 0.5 mg/mL in sterile PBS.
Shipping	The product is shipped at ambient temperature. Upon receipt, store it immediately at the temperature recommended below. *Small pack size (-SP) is shipped with polar packs. Upon receipt, store it immediately at -20 to -70 °C
Stability & Storage	Use a manual defrost freezer and avoid repeated freeze-thaw cycles. <ul style="list-style-type: none"> • 12 months from date of receipt, -20 to -70 °C as supplied. • 1 month, 2 to 8 °C under sterile conditions after reconstitution. • 6 months, -20 to -70 °C under sterile conditions after reconstitution.