

DESCRIPTION

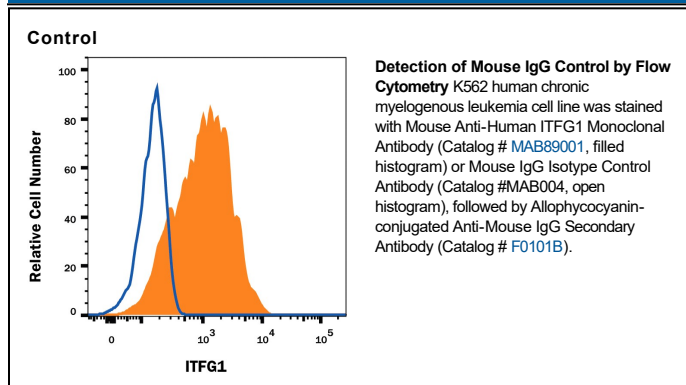
Specificity	Selected for use as mouse IgG2B isotype control. In direct ELISAs, does not cross-react with recombinant human (rh) 6Ckine, recombinant mouse (rm) 6Ckine, rhACT II (rhMIP-1 β), rhBLC/BCA-1, rmBLC, rhBRAK, rmBRAK, rmC10, recombinant rat (rr) CINC-1, rrCINC-2 α , rrCINC-2 β , rrCINC-3, rhCK β 8-1, rmCRG-2, rmCTACK, rhENA-78, rhEotaxin, rmEotaxin, rhEotaxin 2, rmEotaxin-2, rhEotaxin-3, rhFractalkine, rmFractalkine, rrFractalkine, rhGCP-2, rmGCP-2, rhGRO α , rhGRO β , rhGRO γ , rhHCC-1, rhHCC-4, rhl-309, rhIL-8, recombinant porcine IL-8, rhIP-10, rhl-TAC, rml-TAC, rmJE, rmKC, rhLeukotactin-1, rrLIX, rhLymphotactin, rmLymphotactin, rmMARC, rhMCP-1, rhMCP-2, rhMCP-3, rhMCP-4, rmMCP-5, rhMDC, rmMDC, rhMIG, rmMIG, rhMIP-1 α , rmMIP-1 α , rmMIP-1 β , rmMIP-1 γ , rhMIP-1 δ , rmMIP-2, rhMIP-3 α , rmMIP-3 α , rrMIP-3 α , rhMIP-3 β , rmMIP-3 β , recombinant viral (rv) MIP-I, rvMIP-II, rvMIP-III, rhMPIF-1, rhNAP-2, rhParc, rhRANTES, rmRANTES, rhSDF-1 α , rmSDF-1 α , rhSDF-1 β , rhTarc, rmTarc, rmTCA-3, rhTeck, rmTeck, rhVIC, or rmVIC.
Source	Monoclonal Mouse IgG _{2B} Clone # 20116
Purification	Protein A or G purified from hybridoma culture supernatant
Immunogen	KLH
Formulation	Lyophilized from a 0.2 μ m filtered solution in PBS with Trehalose. See Certificate of Analysis for details. *Small pack size (-SP) is supplied either lyophilized or as a 0.2 μ m filtered solution in PBS.

APPLICATIONS

Please Note: Optimal dilutions should be determined by each laboratory for each application. *General Protocols* are available in the *Technical Information* section on our website.

Negative control for use in conjunction with R&D Systems antibodies. Use at the same concentration as the detection antibody.

DATA



PREPARATION AND STORAGE

Reconstitution	Reconstitute at 0.5 mg/mL in sterile PBS.
Shipping	The product is shipped at ambient temperature. Upon receipt, store it immediately at the temperature recommended below. *Small pack size (-SP) is shipped with polar packs. Upon receipt, store it immediately at -20 to -70 °C
Stability & Storage	Use a manual defrost freezer and avoid repeated freeze-thaw cycles. <ul style="list-style-type: none"> ● 12 months from date of receipt, -20 to -70 °C as supplied. ● 1 month, 2 to 8 °C under sterile conditions after reconstitution. ● 6 months, -20 to -70 °C under sterile conditions after reconstitution.