

## DESCRIPTION

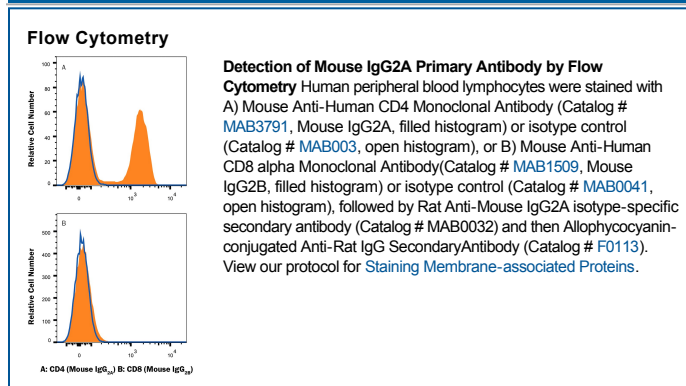
<b>Species Reactivity</b>	Mouse
<b>Specificity</b>	The specificity of this antibody was confirmed by direct ELISA on mouse IgG <sub>2A</sub> monoclonal antibodies, and it does not cross-react with IgG <sub>1</sub> , IgG <sub>2B</sub> , IgG <sub>3</sub> , IgM, IgA, or IgE antibodies. By flow cytometry, this isotype-specific secondary antibody detects primary antibodies of the mouse IgG <sub>2A</sub> isotype, and does not detect primary antibodies of mouse IgG <sub>1</sub> , IgG <sub>2B</sub> , or IgG <sub>3</sub> class.
<b>Source</b>	Monoclonal Rat IgG <sub>1</sub> Clone # 344701
<b>Purification</b>	Protein A or G purified from hybridoma culture supernatant
<b>Immunogen</b>	Cocktail of mouse IgG <sub>1</sub> and IgG <sub>2A</sub>
<b>Formulation</b>	Lyophilized from a 0.2 µm filtered solution in PBS with Trehalose. See Certificate of Analysis for details. *Small pack size (-SP) is supplied as a 0.2 µm filtered solution in PBS.

## APPLICATIONS

**Please Note:** Optimal dilutions should be determined by each laboratory for each application. *General Protocols* are available in the *Technical Information* section on our website.

	Recommended Concentration	Sample
<b>Flow Cytometry</b>	0.25 µg/10 <sup>6</sup> cells	See Below

## DATA



## PREPARATION AND STORAGE

<b>Reconstitution</b>	Reconstitute at 0.5 mg/mL in sterile PBS.
<b>Shipping</b>	The product is shipped at ambient temperature. Upon receipt, store it immediately at the temperature recommended below. *Small pack size (-SP) is shipped with polar packs. Upon receipt, store it immediately at -20 to -70 °C
<b>Stability &amp; Storage</b>	<b>Use a manual defrost freezer and avoid repeated freeze-thaw cycles.</b> <ul style="list-style-type: none"> <li>● 12 months from date of receipt, -20 to -70 °C as supplied.</li> <li>● 1 month, 2 to 8 °C under sterile conditions after reconstitution.</li> <li>● 6 months, -20 to -70 °C under sterile conditions after reconstitution.</li> </ul>

## BACKGROUND

IgG is the most abundant of the five classes of mammalian immunoglobulins in serum. IgG molecules (~150 kDa) consist of two ~50 kDa heavy chains and two 25 kDa light chains connected by disulfide bonds. Antibody specificity is conferred by a combination of somatic rearrangement and hypermutation within variable regions. Mouse IgG isotypes IgG<sub>1</sub>, IgG<sub>2a</sub> and IgG<sub>2b</sub> share approximately 64-78% amino acid sequence identity within the heavy chain constant region domains (CH1, CH2 and CH3) and may vary in their interaction with complement, NK and mast cells, induction or inhibition by specific cytokines, and ability to cross the placenta.