

DESCRIPTION

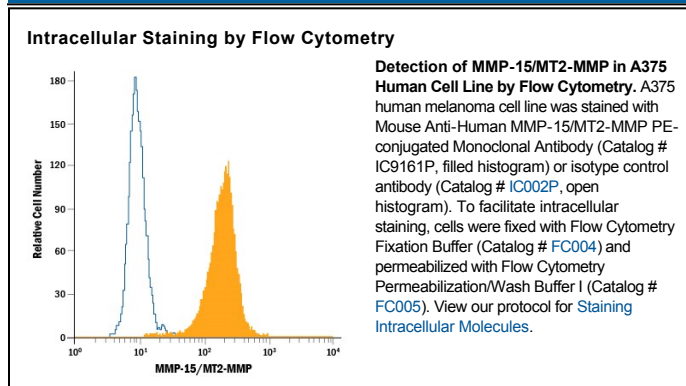
Species Reactivity	Human
Specificity	Detects human MMP-15/MT2-MMP in direct ELISAs and Western blots. Does not detect the catalytic domain of <i>E. coli</i> -expressed recombinant human MMP-15 (aa 132-304).
Source	Monoclonal Mouse IgG ₁ Clone # 130522
Purification	Protein A or G purified from hybridoma culture supernatant
Immunogen	Mouse myeloma cell line NS0-derived recombinant human MMP-15/MT2-MMP aa 132-625
Conjugate	Phycoerythrin Excitation Wavelength: 488 nm Emission Wavelength: 565-605 nm
Formulation	Supplied in a saline solution containing BSA and Sodium Azide. See Certificate of Analysis for details. *Contains <0.1% Sodium Azide, which is not hazardous at this concentration according to GHS classifications. Refer to the Safety Data Sheet (SDS) for additional information and handling instructions.

APPLICATIONS

Please Note: Optimal dilutions should be determined by each laboratory for each application. [General Protocols](#) are available in the [Technical Information](#) section on our website.

	Recommended Concentration	Sample
Intracellular Staining by Flow Cytometry	10 μ L/10 ⁶ cells	See Below

DATA



PREPARATION AND STORAGE

Shipping	The product is shipped with polar packs. Upon receipt, store it immediately at the temperature recommended below.
Stability & Storage	Protect from light. Do not freeze. <ul style="list-style-type: none"> ● 12 months from date of receipt, 2 to 8 °C as supplied.

BACKGROUND

MMP-15, also known as Membrane-Type 2 (MT2) MMP, is a cell surface endopeptidase that plays a role in tumor invasion and metastasis.