

DESCRIPTION

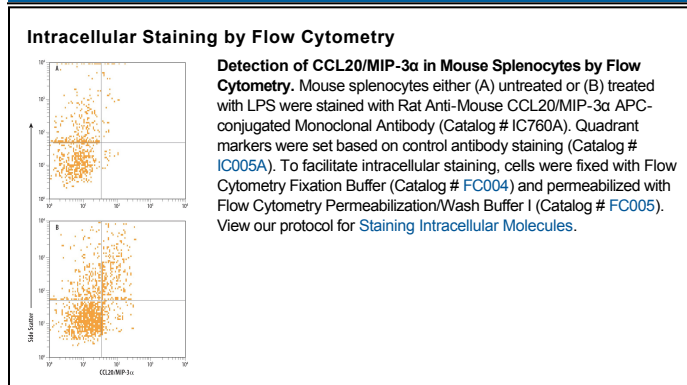
Species Reactivity	Mouse
Specificity	Detects mouse CCL20/MIP-3 α in direct ELISAs and Western blots. In direct ELISAs, 12% cross-reactivity with recombinant rat (rr) CCL20, 6% cross-reactivity with recombinant mouse (rm) CCL12 and recombinant human (rh) CCL25, and 3% cross-reactivity with with rmCCL9/10/MIP-1 γ is observed. No cross-reactivity with recombinant cotton rat CCL3, 4, 5, rhCCL1, 2, 3, 4, 5, 6, 7, 8, 11, 13, 14, 15, 16, 17, 18, 19, 20, 21, 22, 23, 24, 26, 27, 28, rmCCL1, 2, 3, 4, 5, 6, 7, 8, 11, 17, 19, 21, 22, 24, 25, 27, or 28 is observed.
Source	Monoclonal Rat IgG ₁ Clone # 114906
Purification	Protein A or G purified from hybridoma culture supernatant
Immunogen	<i>E. coli</i> -derived recombinant mouse CCL20/MIP-3 α Ala28-Met97 Accession # O89093
Conjugate	Allophycocyanin Excitation Wavelength: 620-650 nm Emission Wavelength: 660-670 nm
Formulation	Supplied in a saline solution containing BSA and Sodium Azide. See Certificate of Analysis for details. *Contains <0.1% Sodium Azide, which is not hazardous at this concentration according to GHS classifications. Refer to the Safety Data Sheet (SDS) for additional information and handling instructions.

APPLICATIONS

Please Note: Optimal dilutions should be determined by each laboratory for each application. *General Protocols* are available in the *Technical Information* section on our website.

	Recommended Concentration	Sample
Intracellular Staining by Flow Cytometry	10 μ L/10 ⁶ cells	See Below

DATA



PREPARATION AND STORAGE

Shipping	The product is shipped with polar packs. Upon receipt, store it immediately at the temperature recommended below.
Stability & Storage	Protect from light. Do not freeze. ● 12 months from date of receipt, 2 to 8 °C as supplied.

BACKGROUND

CCL20, also known as MIP-3 α , LARC, and Exodus, is a β chemokine. Mouse CCL20 cDNA encodes a 97 amino acid precursor protein with a 27 aa putative signal peptide that is predicted to be cleaved to form the 70 aa mature secreted protein. CCL20 is distantly related to other β chemokines (20-28% aa sequence identity). Mouse CCL20 shares approximately 71 and 63% amino acid sequence homology with rat and human CCL20, respectively. CCL20 has been shown to be expressed predominantly in lymph nodes, appendix, PBL, fetal liver, fetal lung, and epithelial cells of intestinal tissues. The expression of CCL20 is strongly upregulated by inflammatory signals and downregulated by the anti-inflammatory cytokine IL-10. CCL20 has been shown to be chemotactic for lymphocytes and dendritic cells, and inhibits proliferation of myeloid progenitors in colony formation assays. CCL20 is a functional ligand for CCR6 (previously referred to as GPR-CY4, CKR-L3, or STRL22 orphan receptor), a chemokine receptor that is selectively and highly expressed in human dendritic cells derived from CD34⁺ cord blood precursors.

References:

1. Baba, M. *et al.* (1997) *J. Biol. Chem.* **272**:14893.
2. Hromas, R. *et al.* (1997) *Blood* **89**:3315.
3. Greaves, D. R. *et al.* (1997) *J. Exp. Med.* **186**: 857.
4. Tanaka, Y. *et al.* (1999) *Eur. J. Immunol.* **29**:633.