

## DESCRIPTION

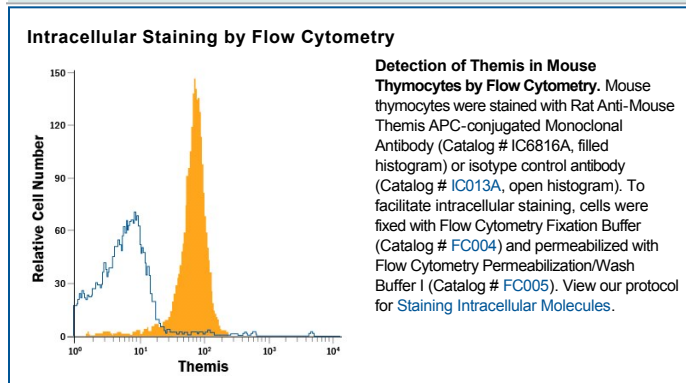
|                           |  |
|---------------------------|--|
| <b>Species Reactivity</b> | Mouse  |
| <b>Specificity</b>        | Detects mouse Themis in direct ELISAs and Western blots. In Western blots, 100% cross-reactivity with recombinant human (rh) Themis (aa 2-282) is observed under non-reducing conditions, and approximately 10% cross-reactivity with rhThemis (aa 2-282) is observed under reducing conditions.                       |
| <b>Source</b>             | Monoclonal Rat IgG <sub>2B</sub> Clone # 719945  |
| <b>Purification</b>       | Protein A or G purified from hybridoma culture supernatant   |
| <b>Immunogen</b>          | <i>E. coli</i> -derived recombinant mouse Themis<br>Lys122-Lys237<br>Accession # Q8BGW0  |
| <b>Conjugate</b>          | Allophycocyanin<br>Excitation Wavelength: 620-650 nm<br>Emission Wavelength: 660-670 nm  |
| <b>Formulation</b>        | Supplied in a saline solution containing BSA and Sodium Azide. See Certificate of Analysis for details.<br><br>*Contains <0.1% Sodium Azide, which is not hazardous at this concentration according to GHS classifications. Refer to the Safety Data Sheet (SDS) for additional information and handling instructions. |

## APPLICATIONS

**Please Note:** Optimal dilutions should be determined by each laboratory for each application. [General Protocols](#) are available in the [Technical Information](#) section on our website.

|   | Recommended Concentration   | Sample    |
|---|-----------------------------|-----------|
| <b>Intracellular Staining by Flow Cytometry</b> | 10 µL/10 <sup>6</sup> cells | See Below |

## DATA



## PREPARATION AND STORAGE

**Shipping** The product is shipped with polar packs. Upon receipt, store it immediately at the temperature recommended below.

**Stability & Storage** **Protect from light. Do not freeze.**

- 12 months from date of receipt, 2 to 8 °C as supplied.

## BACKGROUND

Themis (thymocyte-expressed molecule involved in selection), also called Gasp (Grb2-associating protein), is a 72 kDa, 641 amino acid (aa) cytosolic phosphoprotein mainly expressed in late double-negative and double-positive thymocytes. It is involved in thymocyte positive and negative selection through regulation of TCR signaling. Within the region used as an immunogen, mouse Themis shares 87% and 96% aa sequence identity with human and rat Themis, respectively.