

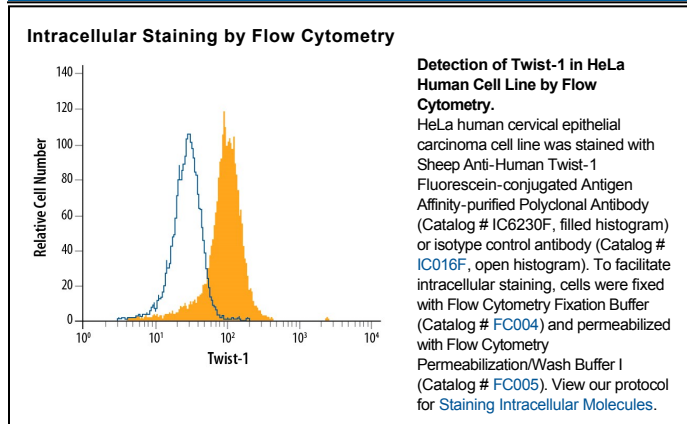
DESCRIPTION	
<b>Species Reactivity</b>	Human
<b>Specificity</b>	Detects human Twist-1 in direct ELISAs. In direct ELISAs, less than 16% cross-reactivity with recombinant human Twist-2 is observed.
<b>Source</b>	Polyclonal Sheep IgG
<b>Purification</b>	Antigen Affinity-purified
<b>Immunogen</b>	<i>E. coli</i> -derived recombinant human Twist-1 Met1-His202 Accession # Q15672
<b>Conjugate</b>	Fluorescein Excitation Wavelength: 488 nm Emission Wavelength: 515-545 nm (FITC)
<b>Formulation</b>	Supplied in a saline solution containing BSA and Sodium Azide. See Certificate of Analysis for details.  *Contains <0.1% Sodium Azide, which is not hazardous at this concentration according to GHS classifications. Refer to the Safety Data Sheet (SDS) for additional information and handling instructions.

## APPLICATIONS

Please Note: Optimal dilutions should be determined by each laboratory for each application. General Protocols are available in the Technical Information section on our website.

	Recommended Concentration	Sample
Intracellular Staining by Flow Cytometry	10 $\mu$ L/10 <sup>6</sup> cells	See Below

## DATA



## PREPARATION AND STORAGE

<b>Shipping</b>	The product is shipped with polar packs. Upon receipt, store it immediately at the temperature recommended below.
<b>Stability &amp; Storage</b>	<b>Protect from light. Do not freeze.</b> <ul style="list-style-type: none"> <li>12 months from date of receipt, 2 to 8 °C as supplied.</li> </ul>

## BACKGROUND

Twist-1 (Twist-related protein 1; also known as H-Twist and bHLHa38) is a 25–27 kDa class B member of the bHLH transcription factor family of proteins. It is widely expressed in embryo, and select adult cells such as white adipocytes. In fat, Twist-1 induces fatty acid oxidation via PGC-1 $\alpha$  and CPT-1, and promotes MCP-1 and TNF- $\alpha$  secretion by adipocytes. In epithelium, Twist-1 dysregulation represses E-Cadherin and induces N-Cadherin expression, resulting in an epithelial-to-mesenchymal transition that can lead to cancer. Human Twist-1 is 202 amino acids (aa) in length. It contains a bHLH domain (aa 109-164) with an embedded DNA-binding motif. Twist-1 forms homodimers, and heterodimerizes with TCF3, HAND 1 and HAND 2. Two distinct mutations exist that may impact its dimerization pattern. There is one seven aa insertion after Ile135, and a second seven aa insertion after Pro139. A third unrelated variant shows a four Gly insert after Gly92. Full-length human Twist-1 shares 98% aa identity with mouse Twist-1.