

DESCRIPTION

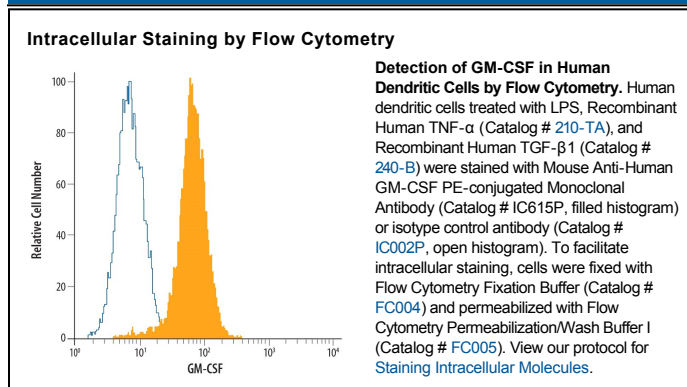
Species Reactivity	Human
Specificity	Detects human GM-CSF in ELISAs. In ELISAs, this antibody does not cross-react with recombinant mouse (rm) GM-CSF, rrGM-CSF, rhM-CSF, rhG-CSF, rhIL-5-R α , or rhIL-3 R α .
Source	Monoclonal Mouse IgG ₁ Clone # 6804
Purification	Protein A or G purified from hybridoma culture supernatant
Immunogen	<i>E. coli</i> -derived recombinant human GM-CSF Ala18-Glu144 Accession # P04141
Conjugate	Phycoerythrin Excitation Wavelength: 488 nm Emission Wavelength: 565-605 nm
Formulation	Supplied in a saline solution containing BSA and Sodium Azide. See Certificate of Analysis for details. *Contains <0.1% Sodium Azide, which is not hazardous at this concentration according to GHS classifications. Refer to the Safety Data Sheet (SDS) for additional information and handling instructions.

APPLICATIONS

Please Note: Optimal dilutions should be determined by each laboratory for each application. *General Protocols* are available in the *Technical Information* section on our website.

	Recommended Concentration	Sample
Intracellular Staining by Flow Cytometry	10 μ L/10 ⁶ cells	See Below

DATA



PREPARATION AND STORAGE

Shipping The product is shipped with polar packs. Upon receipt, store it immediately at the temperature recommended below.

Stability & Storage **Protect from light. Do not freeze.**

- 12 months from date of receipt, 2 to 8 °C as supplied.

BACKGROUND

GM-CSF is a growth factor produced by a variety of lymphoid cells. It binds to receptor heterodimers consisting of a GM-CSF-specific α chain and the common β chain that is shared by the high affinity receptors for IL-3 and IL-5.