

## DESCRIPTION

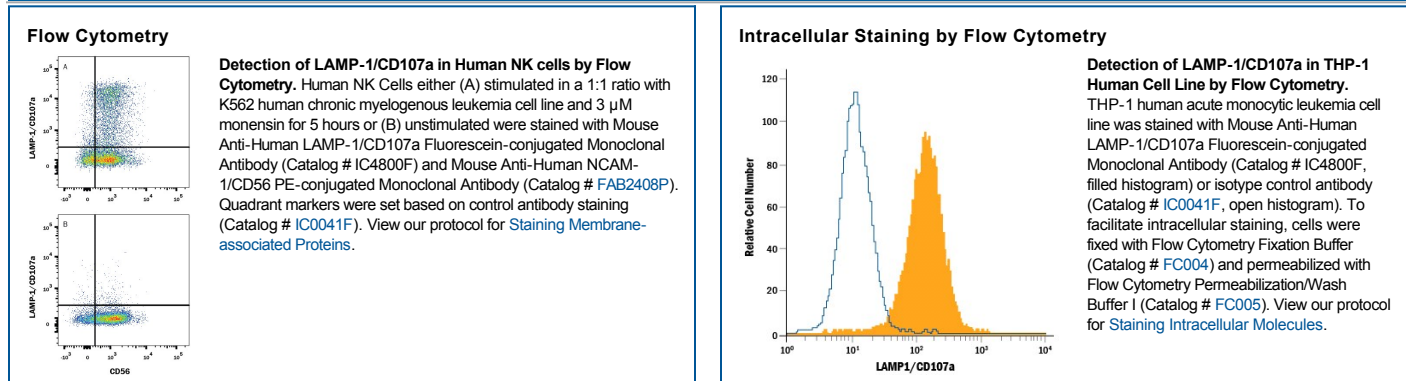
<b>Species Reactivity</b>	Human
<b>Specificity</b>	Detects human LAMP-1/CD107a in direct ELISAs and Western blots.
<b>Source</b>	Monoclonal Mouse IgG <sub>2B</sub> Clone # 508921
<b>Purification</b>	Protein A or G purified from hybridoma culture supernatant
<b>Immunogen</b>	Mouse myeloma cell line NS0-derived recombinant human LAMP-1/CD107a Ala28-Asn380 Accession # P11279
<b>Conjugate</b>	Fluorescein Excitation Wavelength: 488 nm Emission Wavelength: 515-545 nm (FITC)
<b>Formulation</b>	Supplied in a saline solution containing BSA and Sodium Azide. See Certificate of Analysis for details.  *Contains <0.1% Sodium Azide, which is not hazardous at this concentration according to GHS classifications. Refer to the Safety Data Sheet (SDS) for additional information and handling instructions.

## APPLICATIONS

**Please Note:** Optimal dilutions should be determined by each laboratory for each application. *General Protocols* are available in the *Technical Information* section on our website.

	Recommended Concentration	Sample
<b>Flow Cytometry</b>	10 $\mu$ L/10 <sup>6</sup> cells	See Below
<b>Intracellular Staining by Flow Cytometry</b>	10 $\mu$ L/10 <sup>6</sup> cells	See Below

## DATA



## PREPARATION AND STORAGE

<b>Shipping</b>	The product is shipped with polar packs. Upon receipt, store it immediately at the temperature recommended below.
<b>Stability &amp; Storage</b>	<b>Protect from light. Do not freeze.</b> <ul style="list-style-type: none"> <li>12 months from date of receipt, 2 to 8 °C as supplied.</li> </ul>

## BACKGROUND

Lysosome-associated Membrane Protein-1 (LAMP-1), also known as CD107a, is a 100-130 kDa member of the LAMP family of glycoproteins. It is expressed in lysosomal and plasma membranes of macrophages, NK and T cells, and with LAMP-2, is essential for the formation of phagolysosomes. On the cell surface, it also presents carbohydrates to selectins. Mature human LAMP-1 is a 389 amino acid (aa) type I transmembrane glycoprotein. It contains a 354 aa luminal/extracellular domain (ECD) (aa 28-381) and a 12 aa cytoplasmic tail (aa 405-416). The ECD has two large looping regions (aa 28-193 and 227-381) plus multiple N- and O-linked glycosylation sites. There is one reported splice variant that shows a deletion of aa 135-187, and two potential isoform variants that show equal number aa substitutions within the first 40 aa of the molecule's ORF. Over aa 28-380, human LAMP-1 shares 64% aa identity with mouse LAMP-1.