

DESCRIPTION

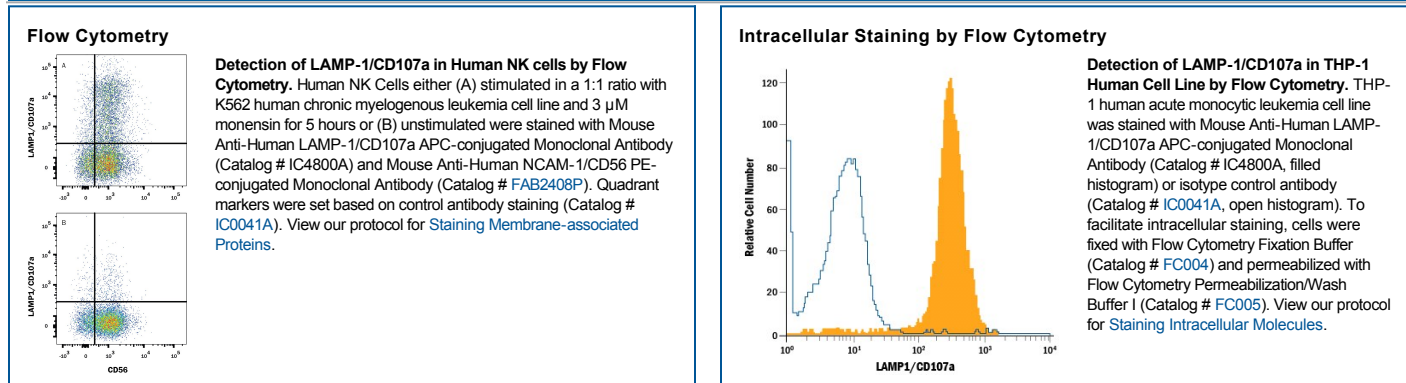
Species Reactivity	Human
Specificity	Detects human LAMP-1/CD107a in direct ELISAs and Western blots.
Source	Monoclonal Mouse IgG _{2B} Clone # 508921
Purification	Protein A or G purified from hybridoma culture supernatant
Immunogen	Mouse myeloma cell line NS0-derived recombinant human LAMP-1/CD107a Ala28-Asn380 Accession # P11279
Conjugate	Allophycocyanin Excitation Wavelength: 620-650 nm Emission Wavelength: 660-670 nm
Formulation	Supplied in a saline solution containing BSA and Sodium Azide. See Certificate of Analysis for details. *Contains <0.1% Sodium Azide, which is not hazardous at this concentration according to GHS classifications. Refer to the Safety Data Sheet (SDS) for additional information and handling instructions.

APPLICATIONS

Please Note: Optimal dilutions should be determined by each laboratory for each application. *General Protocols* are available in the *Technical Information* section on our website.

	Recommended Concentration	Sample
Flow Cytometry	10 μ L/10 ⁶ cells	See Below
Intracellular Staining by Flow Cytometry	10 μ L/10 ⁶ cells	See Below

DATA



PREPARATION AND STORAGE

Shipping	The product is shipped with polar packs. Upon receipt, store it immediately at the temperature recommended below.
Stability & Storage	Protect from light. Do not freeze. <ul style="list-style-type: none"> 12 months from date of receipt, 2 to 8 °C as supplied.

BACKGROUND

Lysosome-Associated Membrane Protein-1 (LAMP-1), also known as CD107a, is a 100-130 kDa member of the LAMP family of glycoproteins. It is expressed in lysosomal and plasma membranes of macrophages, NK and T-cells, and with LAMP-2, is essential for the formation of phagolysosomes. On the cell surface, it also presents carbohydrates to selectins. Mature human LAMP-1 is a 389 amino acid (aa) type I transmembrane glycoprotein. It contains a 354 aa luminal/extracellular domain (ECD) (aa 28-381) and a 12 aa cytoplasmic tail (aa 405-416). The ECD has two large looping regions (aa 28-193 and 227-381) plus multiple N- and O-linked glycosylation sites. There is one potential splice variant that shows a 26 aa substitution in the signal sequence. Over aa 28-380, human LAMP-1 shares 64% aa identity with mouse LAMP-1.