

DESCRIPTION

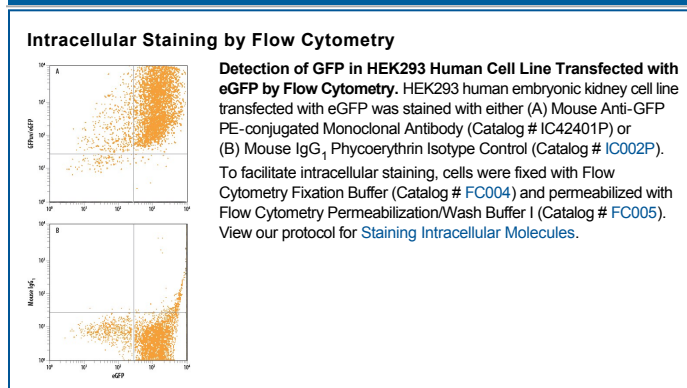
Specificity	Detects recombinant GFPuv and eGFP in Western blots.
Source	Monoclonal Mouse IgG ₁ Clone # 454505
Purification	Protein A or G purified from hybridoma culture supernatant
Immunogen	<i>E. coli</i> -derived recombinant GFPuv Ser2-Lys238 Accession # P42212
Conjugate	Phycoerythrin Excitation Wavelength: 488 nm Emission Wavelength: 565-605 nm
Formulation	Supplied in a saline solution containing BSA and Sodium Azide. See Certificate of Analysis for details. *Contains <0.1% Sodium Azide, which is not hazardous at this concentration according to GHS classifications. Refer to the Safety Data Sheet (SDS) for additional information and handling instructions.

APPLICATIONS

Please Note: Optimal dilutions should be determined by each laboratory for each application. *General Protocols* are available in the *Technical Information* section on our website.

	Recommended Concentration	Sample
Intracellular Staining by Flow Cytometry	10 μ L/10 ⁶ cells	See Below

DATA



PREPARATION AND STORAGE

Shipping	The product is shipped with polar packs. Upon receipt, store it immediately at the temperature recommended below.
Stability & Storage	Protect from light. Do not freeze. <ul style="list-style-type: none"> ● 12 months from date of receipt, 2 to 8 °C as supplied.

BACKGROUND

Green fluorescent protein (GFP) is a 27 kDa protein originally isolated from the jellyfish *Aequorea victoria*. In the presence of UV light (490-520 nm), it emits a green fluorescent color that can be used to pinpoint locations of various intracellular proteins. GFP is 238 amino acids (aa) in length. It is a globular monomer that has a tendency to dimerize. The monomer has the shape of a β -barrel with a chromophore (aa 65-67) containing α -helix running up its center. GFPuv is the *Aequorea* sequence with three aa substitutions; Phe to Ser at # 99, Met to Thr at # 153, and Val to Ala at # 163. This form expresses faster and is 18-fold brighter than native GFP; excitation peaks at 395 nm and emission at 508 nm.