

DESCRIPTION

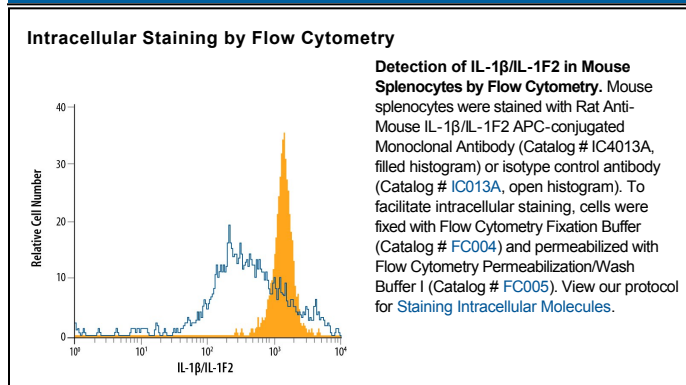
Species Reactivity	Mouse
Specificity	Detects mouse IL-1 β /IL-1F2 in direct ELISAs. In direct ELISAs, approximately 75% cross-reactivity with recombinant guinea pig IL-1 β , 5-15% cross-reactivity with recombinant canine, cotton rat, feline, equine, and rat IL-1 β , and no cross-reactivity with recombinant human, porcine, and rhesus IL-1 β is observed. No cross-reactivity with recombinant human (rh) Pro-IL-1 β , rhIL-1F7, rhIL-1F10, rhIL-36 γ , recombinant mouse (rm) IL-1 α , rmIL-18, rmIL-36Ra, rmIL-36 α , or rmIL-36 β is observed.
Source	Monoclonal Rat IgG _{2B} Clone # 166931
Purification	Protein A or G purified from hybridoma culture supernatant
Immunogen	<i>E. coli</i> -derived recombinant mouse IL-1 β /IL-1F2 Val118-Ser269 Accession # P10749
Conjugate	Allophycocyanin Excitation Wavelength: 620-650 nm Emission Wavelength: 660-670 nm
Formulation	Supplied in a saline solution containing BSA and Sodium Azide. See Certificate of Analysis for details. *Contains <0.1% Sodium Azide, which is not hazardous at this concentration according to GHS classifications. Refer to the Safety Data Sheet (SDS) for additional information and handling instructions.

APPLICATIONS

Please Note: Optimal dilutions should be determined by each laboratory for each application. *General Protocols* are available in the *Technical Information* section on our website.

	Recommended Concentration	Sample
Intracellular Staining by Flow Cytometry	10 μ L/10 ⁶ cells	See Below

DATA



PREPARATION AND STORAGE

Shipping	The product is shipped with polar packs. Upon receipt, store it immediately at the temperature recommended below.
Stability & Storage	Protect from light. Do not freeze. <ul style="list-style-type: none"> ● 12 months from date of receipt, 2 to 8 °C as supplied.

BACKGROUND

IL-1 β is a pro-inflammatory cytokine belonging to the IL-1 superfamily, designated IL-1F2. IL-1 β and IL-1 α /IL-1F1 bind the same receptors but vary in expression and affinity. They share only 25% amino acid (aa) sequence identity and are produced from separate genes. IL-1 β is synthesized as a 31 kDa pro-form that is cleaved intracellularly by caspase-1 to produce the mature active 17.5 kDa IL-1 β . Mature mouse IL-1 β shares 74% and 91% aa identity with human and rat IL-1 β , respectively.