

## DESCRIPTION

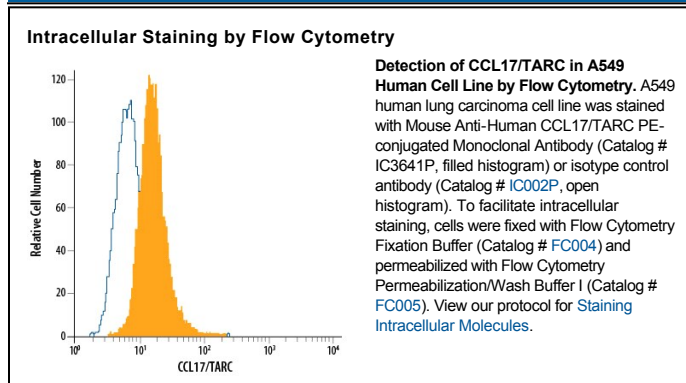
<b>Species Reactivity</b>	Human
<b>Specificity</b>	Detects human CCL17/TARC in direct ELISAs and Western blots. In direct ELISAs and Western blots, no cross-reactivity with recombinant human CCL1, 2, 3, 4, 5, 7, 8, 11, 13, 14, 15, 16, 17, 18, 19, 20, 21, 22, 23, 24, 25, 26, 27, 28, recombinant mouse CCL1, 2, 3, 4, 5, 6, 7, 8, 9, 11, 12, 17, 19, 20, 21, 22, 24, 25, 27 or recombinant rat CCL20 is observed.
<b>Source</b>	Monoclonal Mouse IgG <sub>1</sub> Clone # 54015
<b>Purification</b>	Protein A or G purified from ascites
<b>Immunogen</b>	<i>E. coli</i> -derived recombinant human CCL17/TARC Ala24-Ser94 Accession # Q92583.1
<b>Conjugate</b>	Phycoerythrin Excitation Wavelength: 488 nm Emission Wavelength: 565-605 nm
<b>Formulation</b>	Supplied in a saline solution containing BSA and Sodium Azide. See Certificate of Analysis for details.  *Contains <0.1% Sodium Azide, which is not hazardous at this concentration according to GHS classifications. Refer to the Safety Data Sheet (SDS) for additional information and handling instructions.

## APPLICATIONS

**Please Note:** Optimal dilutions should be determined by each laboratory for each application. *General Protocols* are available in the *Technical Information* section on our website.

	Recommended Concentration	Sample
Intracellular Staining by Flow Cytometry	10 µL/10 <sup>6</sup> cells	See Below

## DATA



## PREPARATION AND STORAGE

<b>Shipping</b>	The product is shipped with polar packs. Upon receipt, store it immediately at the temperature recommended below.
<b>Stability &amp; Storage</b>	<b>Protect from light. Do not freeze.</b> <ul style="list-style-type: none"> <li>● 12 months from date of receipt, 2 to 8 °C as supplied.</li> </ul>

## BACKGROUND

CCL17, also called TARC, is a member of the CC chemokine family. CCL17 cDNA encodes a highly basic 94 amino acid (aa) residue precursor protein with a 23 aa residue signal peptide that is cleaved to generate the 71 aa residue mature secreted protein. Among CC chemokine family members, CCL17 has approximately 24–29% amino acid sequence identity with CCL1, 2, 3, 4, 5, 7 and 8. The gene for human CCL17 has been mapped to chromosome 16q13 rather than chromosome 17 where the genes for many human CC chemokines are clustered. CCL17 is constitutively expressed in thymus, and at a lower level in lung, colon, and small intestine. CCL17 is also transiently expressed in stimulated peripheral blood mononuclear cells. Recombinant CCL17 has been shown to be chemotactic for T cell lines but not monocytes or neutrophils. CCL17 was identified to be a specific functional ligand for CCR4, a receptor that is selectively expressed on T cells.

## References:

1. Imai, T. *et al.* (1997) *J. Biol. Chem.* **272**:15036.
2. Imai, T. *et al.* (1996) *J. Biol. Chem.* **271**:21514.
3. Nomiya, H. *et al.* (1997) *Genomics* **40**:211.