

DESCRIPTION

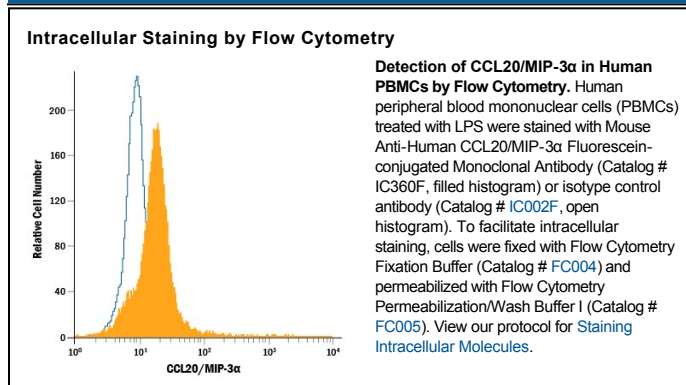
| | |
|---------------------------|--|
| Species Reactivity | Human |
| Specificity | Detects human CCL20/MIP-3 α in ELISAs and Western blots. In ELISAs, this antibody does not cross-react with recombinant human (rh) CCL19, rhCXCL1, rhCCL16, rhCCL11, recombinant mouse CCL20, or recombinant rat CCL20. |
| Source | Monoclonal Mouse IgG ₁ Clone # 67310 |
| Purification | Protein A or G purified from ascites |
| Immunogen | <i>E. coli</i> -derived recombinant human CCL20/MIP-3 α Ala27-Met96 (Asn95Asp) Accession # P78556.1 |
| Conjugate | Fluorescein Excitation Wavelength: 488 nm Emission Wavelength: 515-545 nm (FITC) |
| Formulation | Supplied in a saline solution containing BSA and Sodium Azide. See Certificate of Analysis for details. *Contains <0.1% Sodium Azide, which is not hazardous at this concentration according to GHS classifications. Refer to the Safety Data Sheet (SDS) for additional information and handling instructions. |

APPLICATIONS

Please Note: Optimal dilutions should be determined by each laboratory for each application. *General Protocols* are available in the *Technical Information* section on our website.

| | Recommended Concentration | Sample |
|---|----------------------------------|---------------|
| Intracellular Staining by Flow Cytometry | 10 μ L/10 ⁶ cells | See Below |

DATA



PREPARATION AND STORAGE

Shipping The product is shipped with polar packs. Upon receipt, store it immediately at the temperature recommended below.

Stability & Storage **Protect from light. Do not freeze.**

- 12 months from date of receipt, 2 to 8 °C as supplied.

BACKGROUND

CCL20, also known as LARC (Liver and Activation-regulated Chemokine) and Exodus-1, is one of many novel β chemokines identified through bioinformatics. CCL20 cDNA encodes a 96 amino acid (aa) residue precursor protein with a 26 aa residue signal peptide that is predicted to be cleaved to form the 70 aa residue mature secreted protein. CCL20 is distantly related to other β chemokines (20 - 28% aa sequence identity) and the gene for CCL20 has been mapped to chromosome 2 rather than 17.

CCL20 has been shown to be expressed predominantly in lymph nodes, appendix, PBL, fetal liver, fetal lung and several cell lines. The expression of CCL20 is strongly up-regulated by inflammatory signals and down-regulated by the anti-inflammatory cytokine IL-10. Synthetic or recombinant CCL20 has been shown to be chemotactic for lymphocytes and to inhibit proliferation of myeloid progenitors in colony formation assays. CCL20 has now been shown to be a unique functional ligand for CCR6 (previously referred to as GPR-CY4, CKR-L3, or STRL22 orphan receptor), a chemokine receptor that is selectively and highly expressed in human dendritic cells derived from CD34⁺ cord blood precursors.

References:

1. Baba, M. *et al.* (1997) *J. Biol. Chem.* **272**:14893.
2. Hromas, R. *et al.* (1997) *Blood* **89**:3315.
3. Greaves, D.R. *et al.* (1997) *J. Exp. Med.* **186**:837.