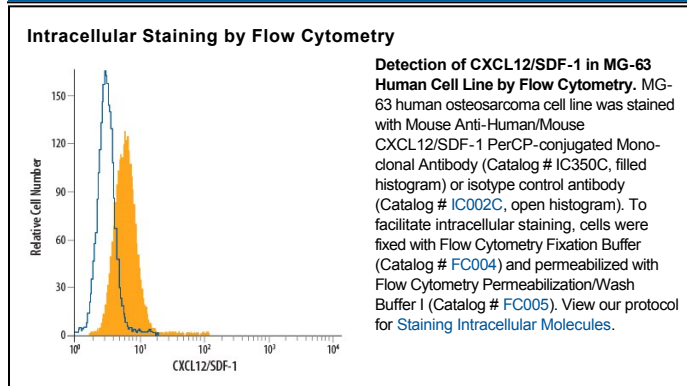


DESCRIPTION	
Species Reactivity	Human/Mouse
Specificity	Detects human and mouse CXCL12/SDF-1 α and CXCL12/SDF-1 β in ELISAs.
Source	Monoclonal Mouse IgG ₁ Clone # 79018
Purification	Protein A or G purified from hybridoma culture supernatant
Immunogen	<i>E. coli</i> -derived recombinant human CXCL12/SDF-1 α Lys22-Lys89 Accession # Q6ICW0
Conjugate	PerCP (Peridinin-chlorophyll Protein Complex) Excitation Wavelength: 482 and 564 nm Emission Wavelength: 675 nm
Formulation	Supplied in a saline solution containing BSA and Sodium Azide. See Certificate of Analysis for details. *Contains <0.1% Sodium Azide, which is not hazardous at this concentration according to GHS classifications. Refer to the Safety Data Sheet (SDS) for additional information and handling instructions.

APPLICATIONS
Please Note: Optimal dilutions should be determined by each laboratory for each application. [General Protocols](#) are available in the [Technical Information](#) section on our website.

	Recommended Concentration	Sample
Intracellular Staining by Flow Cytometry	10 μ L/10 ⁶ cells	See Below

DATA



PREPARATION AND STORAGE

Shipping	The product is shipped with polar packs. Upon receipt, store it immediately at the temperature recommended below.
Stability & Storage	Protect from light. Do not freeze. <ul style="list-style-type: none"> 12 months from date of receipt, 2 to 8 °C as supplied.

BACKGROUND

CXCL12, also known as SDF-1, is a CXC chemokine that interacts with CXCR4. SDF-1 α and SDF-1 β are alternatively spliced isoforms of CXCL12. SDF-1 β has an additional 4 amino acids at the carboxy-terminus.