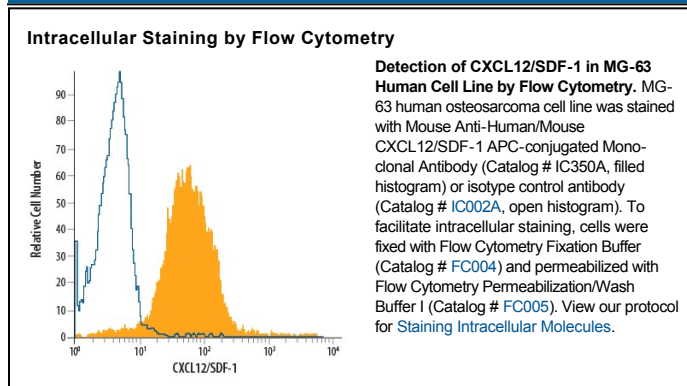


DESCRIPTION	
<b>Species Reactivity</b>	Human/Mouse
<b>Specificity</b>	Detects human and mouse CXCL12/SDF-1 $\alpha$ and CXCL12/SDF-1 $\beta$ in ELISAs.
<b>Source</b>	Monoclonal Mouse IgG <sub>1</sub> Clone # 79018
<b>Purification</b>	Protein A or G purified from hybridoma culture supernatant
<b>Immunogen</b>	<i>E. coli</i> -derived recombinant human CXCL12/SDF-1 $\alpha$ Lys22-Lys89 Accession # Q6ICW0
<b>Conjugate</b>	Allophycocyanin Excitation Wavelength: 620-650 nm Emission Wavelength: 660-670 nm
<b>Formulation</b>	Supplied in a saline solution containing BSA and Sodium Azide. See Certificate of Analysis for details.  *Contains <0.1% Sodium Azide, which is not hazardous at this concentration according to GHS classifications. Refer to the Safety Data Sheet (SDS) for additional information and handling instructions.

**APPLICATIONS**  
Please Note: Optimal dilutions should be determined by each laboratory for each application. [General Protocols](#) are available in the [Technical Information](#) section on our website.

	Recommended Concentration	Sample
<b>Intracellular Staining by Flow Cytometry</b>	10 $\mu$ L/10 <sup>6</sup> cells	See Below

**DATA**



**PREPARATION AND STORAGE**

<b>Shipping</b>	The product is shipped with polar packs. Upon receipt, store it immediately at the temperature recommended below.
<b>Stability &amp; Storage</b>	<b>Protect from light. Do not freeze.</b> <ul style="list-style-type: none"> <li>12 months from date of receipt, 2 to 8 °C as supplied.</li> </ul>

**BACKGROUND**

CXCL12, also known as SDF-1, is a CXC chemokine that interacts with CXCR4. SDF-1 $\alpha$  and SDF-1 $\beta$  are alternatively spliced isoforms of CXCL12. SDF-1 $\beta$  has an additional 4 amino acids at the carboxy-terminus.