

Human Cytokeratin 19 Alexa Fluor® 488-conjugated Antibody

Antigen Affinity-purified Polyclonal Sheep IgG
Catalog Number: IC3506G
100 Tests

DESCRIPTION

Species Reactivity	Human
Specificity	Cytokeratin 19 antibodies are ideal for immunocytochemistry colocalization studies. The unconjugated antibody detects human Cytokeratin 19 in direct ELISAs and Western blots. In direct ELISAs, less than 10% cross-reactivity with recombinant human Cytokeratin 14 is observed.
Source	Polyclonal Sheep IgG
Purification	Antigen Affinity-purified
Immunogen	<i>E. coli</i> -derived recombinant human Cytokeratin 19 Thr2-Leu400 Accession # P08727
Conjugate	Alexa Fluor 488 Excitation Wavelength: 488 nm Emission Wavelength: 515-545 nm
Formulation	Supplied in a saline solution containing BSA and Sodium Azide. See Certificate of Analysis for details. *Contains <0.1% Sodium Azide, which is not hazardous at this concentration according to GHS classifications. Refer to the Safety Data Sheet (SDS) for additional information and handling instructions.

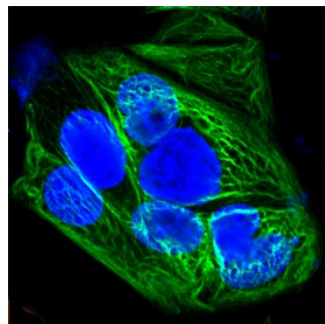
APPLICATIONS

Please Note: Optimal dilutions should be determined by each laboratory for each application. [General Protocols](#) are available in the Technical Information section on our website.

	Recommended Concentration	Sample
Immunocytochemistry	1:10 dilution	See Below
Intracellular Staining by Flow Cytometry	5 µL/10 ⁶ cells	See Below

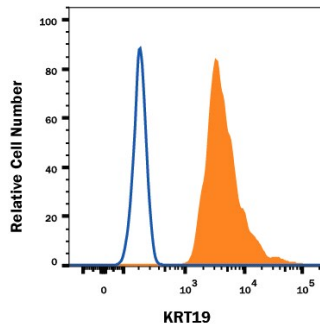
DATA

Immunocytochemistry



Cytokeratin 19 in MCF-7 Human Cell Line. Cytokeratin 19 was detected in formaldehyde fixed MCF-7 human breast cancer cell line using Sheep Anti-Human Cytokeratin 19 Alexa Fluor® 488-conjugated Antigen Affinity-purified Polyclonal Antibody (green; Catalog # IC3506G) at 1:10 dilution overnight at 4 °C and counterstained with DAPI (blue). Specific staining was localized to intermediate filaments. View our protocol for [Fluorescent ICC Staining of Cells on Coverslips](#).

Intracellular Staining by Flow Cytometry



Detection of KRT19 in Human MCF-7 cell line by Flow Cytometry. MCF-7 human breast cancer cell line was stained with Sheep Anti-Human KRT19 Alexa Fluor® 488-conjugated Affinity Purified Polyclonal Antibody (Catalog # IC3506G, filled histogram) or control antibody (Catalog # IC016G, open histogram). To facilitate intracellular staining, cells were fixed and permeabilized with FlowX FoxP3 Fixation & Permeabilization Buffer Kit (Catalog # FC012). View our protocol for [Staining Intracellular Molecules](#).

PREPARATION AND STORAGE

Shipping	The product is shipped with polar packs. Upon receipt, store it immediately at the temperature recommended below.
Stability & Storage	Protect from light. Do not freeze. ● 12 months from date of receipt, 2 to 8 °C as supplied.

BACKGROUND

Cytokeratin 19 (Keratin, type I cytoskeletal 19; also KRT-19, CK19 and Keratin-19) is a 40-45 kDa, acidic Class I keratin member of the intermediate filament family of proteins. Individual keratins are always expressed in tandem with a second keratin, and these are found in all epithelial cells. The class I KRT-19 heterodimerizes/polymerizes with 50-52 kDa class II KRT-8 (plus KRT-5 and -7) to form 8-10 nm filaments in epidermal stem cells, secretory gland (sweat; mammary; bile duct) simple epithelium, and neuroendocrine epidermal Merkel cells. It may represent a viable marker for skin stem cells. In skin, Cytokeratin 19 forms filaments in the fetal epithelium, and then progressively decreases with age, being virtually absent by age 17. Human Cytokeratin 19 is 400 amino acids (aa) in length. It contains an N-terminal "head" region (aa 1-79) and a subsequent "rod" region (aa 80-387), but is absent a typical C-terminal tail region. Cytokeratin 19 possesses at least 5 utilized phosphorylation sites plus one acetylated Lys residue. Based on other keratins, and the presence of an Asp at position 238, there may be caspase cleavage-generated isoforms. Full length human Cytokeratin 19 (aa 2-400) shares 82% aa sequence identity with mouse Cytokeratin 19.

Human Cytokeratin 19 Alexa Fluor® 488-conjugated Antibody

Antigen Affinity-purified Polyclonal Sheep IgG
Catalog Number: IC3506G
100 Tests

PRODUCT SPECIFIC NOTICES

This product is provided under an agreement between Life Technologies Corporation and R&D Systems, Inc, and the manufacture, use, sale or import of this product is subject to one or more US patents and corresponding non-US equivalents, owned by Life Technologies Corporation and its affiliates. The purchase of this product conveys to the buyer the non-transferable right to use the purchased amount of the product and components of the product only in research conducted by the buyer (whether the buyer is an academic or for-profit entity). The sale of this product is expressly conditioned on the buyer not using the product or its components (1) in manufacturing; (2) to provide a service, information, or data to an unaffiliated third party for payment; (3) for therapeutic, diagnostic or prophylactic purposes; (4) to resell, sell, or otherwise transfer this product or its components to any third party, or for any other commercial purpose. Life Technologies Corporation will not assert a claim against the buyer of the infringement of the above patents based on the manufacture, use or sale of a commercial product developed in research by the buyer in which this product or its components was employed, provided that neither this product nor any of its components was used in the manufacture of such product. For information on purchasing a license to this product for purposes other than research, contact Life Technologies Corporation, Cell Analysis Business Unit, Business Development, 29851 Willow Creek Road, Eugene, OR 97402, Tel: (541) 465-8300. Fax: (541) 335-0354.