

## DESCRIPTION

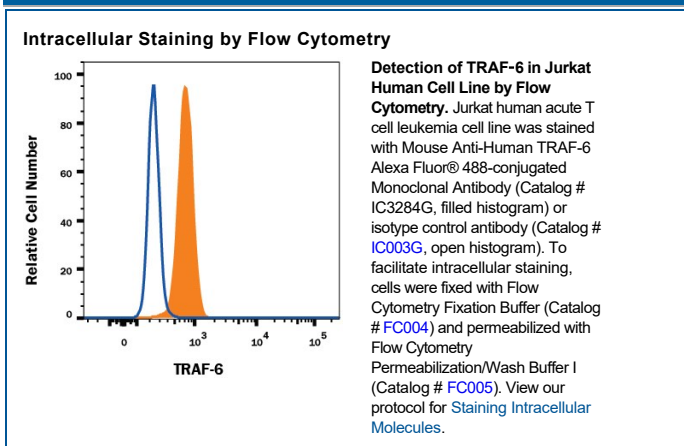
|                           |                                                                                                                                                                                                                                                                               |
|---------------------------|-------------------------------------------------------------------------------------------------------------------------------------------------------------------------------------------------------------------------------------------------------------------------------|
| <b>Species Reactivity</b> | Human                                                                                                                                                                                                                                                                         |
| <b>Specificity</b>        | Detects human TRAF-6 in direct ELISAs.                                                                                                                                                                                                                                        |
| <b>Source</b>             | Monoclonal Mouse IgG <sub>2A</sub> Clone # 326019                                                                                                                                                                                                                             |
| <b>Purification</b>       | Protein A or G purified from hybridoma culture supernatant                                                                                                                                                                                                                    |
| <b>Immunogen</b>          | <i>E.coli</i> -derived recombinant human TRAF-6<br>Met1-Val522<br>Accession # Q9Y4K3                                                                                                                                                                                          |
| <b>Conjugate</b>          | Alexa Fluor 488<br>Excitation Wavelength: 488 nm<br>Emission Wavelength: 515-545 nm                                                                                                                                                                                           |
| <b>Formulation</b>        | Supplied in a saline solution containing BSA and Sodium Azide.<br><br>*Contains <0.1% Sodium Azide, which is not hazardous at this concentration according to GHS classifications. Refer to the Safety Data Sheet (SDS) for additional information and handling instructions. |

## APPLICATIONS

**Please Note:** Optimal dilutions should be determined by each laboratory for each application. [General Protocols](#) are available in the Technical Information section on our website.

|                                                 | <b>Recommended Concentration</b> | <b>Sample</b> |
|-------------------------------------------------|----------------------------------|---------------|
| <b>Intracellular Staining by Flow Cytometry</b> | 5 µL/10 <sup>6</sup> cells       | See Below     |

## DATA



## PREPARATION AND STORAGE

|                                |                                                                                                                                                                  |
|--------------------------------|------------------------------------------------------------------------------------------------------------------------------------------------------------------|
| <b>Shipping</b>                | The product is shipped with polar packs. Upon receipt, store it immediately at the temperature recommended below.                                                |
| <b>Stability &amp; Storage</b> | <b>Protect from light. Use a manual defrost freezer and avoid repeated freeze-thaw cycles.</b><br>• 12 months, 2 to 8 °C under sterile conditions after opening. |

## BACKGROUND

Tumor Necrosis Factor (TNF) Receptor-Associated Factors (TRAFs) are a family of adaptor proteins that interact with a wide range of cell surface receptors and participate in the regulation of cell survival, proliferation, differentiation, and stress response. TRAFs were identified by their ability to form complexes with TNF receptor superfamily members but more recently are reported to also bind to Toll/IL-1 receptor family members and mediate cellular signaling. Six members of the TRAF family have been identified. All TRAF proteins have a homologous C-terminal TRAF domain that can bind the cytoplasmic domain of receptors as well as other TRAFs. TRAFs2-6 have N-terminal RING and zinc finger domains that are involved in signaling downstream events. TRAF-6 is a 522 amino acid, 60 kDa protein. Overexpression of TRAF-6 mediates the activation of NF-kappa-B and JNK signaling pathways. TRAF-3 and TRAF-6 have been identified as adaptor molecules involved in TLR/IL-1R signaling events.

**PRODUCT SPECIFIC NOTICES**

This product is provided under an agreement between Life Technologies Corporation and R&D Systems, Inc, and the manufacture, use, sale or import of this product is subject to one or more US patents and corresponding non-US equivalents, owned by Life Technologies Corporation and its affiliates. The purchase of this product conveys to the buyer the non-transferable right to use the purchased amount of the product and components of the product only in research conducted by the buyer (whether the buyer is an academic or for-profit entity). The sale of this product is expressly conditioned on the buyer not using the product or its components (1) in manufacturing; (2) to provide a service, information, or data to an unaffiliated third party for payment; (3) for therapeutic, diagnostic or prophylactic purposes; (4) to resell, sell, or otherwise transfer this product or its components to any third party, or for any other commercial purpose. Life Technologies Corporation will not assert a claim against the buyer of the infringement of the above patents based on the manufacture, use or sale of a commercial product developed in research by the buyer in which this product or its components was employed, provided that neither this product nor any of its components was used in the manufacture of such product. For information on purchasing a license to this product for purposes other than research, contact Life Technologies Corporation, Cell Analysis Business Unit, Business Development, 29851 Willow Creek Road, Eugene, OR 97402, Tel: (541) 465-8300. Fax: (541) 335-0354.