

## DESCRIPTION

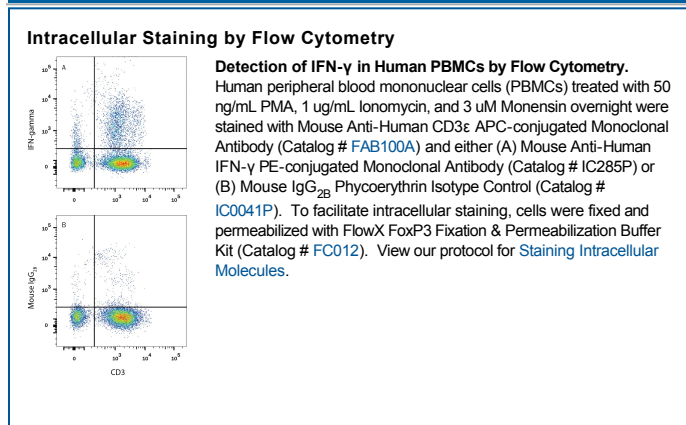
<b>Species Reactivity</b>	Human
<b>Specificity</b>	Detects human IFN- $\gamma$ in direct ELISAs. In direct ELISAs, no cross-reactivity with recombinant mouse IFN- $\gamma$ , recombinant rat IFN- $\gamma$ , or recombinant porcine IFN- $\gamma$ is observed.
<b>Source</b>	Monoclonal Mouse IgG <sub>2B</sub> Clone # 25723
<b>Purification</b>	Protein A or G purified from hybridoma culture supernatant
<b>Immunogen</b>	<i>E. coli</i> -derived recombinant human IFN- $\gamma$ Gln24-Gln166 Accession # AAP20098.1
<b>Conjugate</b>	Phycoerythrin Excitation Wavelength: 488 nm Emission Wavelength: 565-605 nm
<b>Formulation</b>	Supplied in a saline solution containing BSA and Sodium Azide. See Certificate of Analysis for details.  *Contains <0.1% Sodium Azide, which is not hazardous at this concentration according to GHS classifications. Refer to the Safety Data Sheet (SDS) for additional information and handling instructions.

## APPLICATIONS

**Please Note:** Optimal dilutions should be determined by each laboratory for each application. *General Protocols* are available in the *Technical Information* section on our website.

	<b>Recommended Concentration</b>	<b>Sample</b>
<b>Intracellular Staining by Flow Cytometry</b>	10 $\mu$ L/10 <sup>6</sup> cells	See Below

## DATA



## PREPARATION AND STORAGE

<b>Shipping</b>	The product is shipped with polar packs. Upon receipt, store it immediately at the temperature recommended below.
<b>Stability &amp; Storage</b>	<b>Protect from light. Do not freeze.</b> <ul style="list-style-type: none"> <li>12 months from date of receipt, 2 to 8 °C as supplied.</li> </ul>

**BACKGROUND**

Interferon-gamma (IFN- $\gamma$ ), also known as type II or immune interferon, exerts a wide range of immunoregulatory activities and is considered to be the prototype proinflammatory cytokine (1, 2). Mature human IFN- $\gamma$  exists as a non-covalently linked homodimer of 20-25 kDa variably glycosylated subunits (3). It shares 90% amino acid (aa) sequence identity with rhesus IFN- $\gamma$ , 59-64% with bovine, canine, equine, feline, and porcine IFN- $\gamma$ , and 37-43% with cotton rat, mouse, and rat IFN- $\gamma$ . IFN- $\gamma$  dimers bind to IFN- $\gamma$  RI (alpha subunits) which then interact with IFN- $\gamma$  RII (beta subunits) to form the functional receptor complex of two  $\alpha$  and two  $\beta$  subunits. Inclusion of IFN- $\gamma$  RII increases the binding affinity for ligand and the efficiency of signal transduction (4, 5). IFN- $\gamma$  is produced by a variety of immune cells under inflammatory conditions, notably by T cells and NK cells (6). It plays a key role in host defense by promoting the development and activation of Th1 cells, chemoattraction and activation of monocytes and macrophages, upregulation of antigen presentation molecules, and immunoglobulin class switching in B cells. It also exhibits antiviral, antiproliferative, and apoptotic effects (6, 7). In addition, IFN- $\gamma$  functions as an anti-inflammatory mediator by promoting the development of regulatory T cells and inhibiting Th17 cell differentiation (8, 9). The pleiotropic effects of IFN- $\gamma$  contribute to the development of multiple aspects of atherosclerosis (7).

**References:**

1. Billiau, A. and P. Matthys (2009) Cytokine Growth Factor Rev. **20**:97.
2. Pestka, S. *et al.* (2004) Immunol. Rev. **202**:8.
3. Gray, P.W. and D.V. Goeddel (1982) Nature **298**:859.
4. Marsters, S.A. *et al.* (1995) Proc. Natl. Acad. Sci. USA **92**:5401.
5. Krause, C.D. *et al.* (2000) J. Biol. Chem. **275**:22995.
6. Schroder, K. *et al.* (2004) J. Leukoc. Biol. **75**:163.
7. McLaren, J.E. and D.P. Ramji (2009) Cytokine Growth Factor Rev. **20**:125.
8. Muhl, H. and J. Pfeilschifter (2003) Int. Immunopharmacol. **3**:1247.
9. Kelchtermans, H. *et al.* (2008) Trends Immunol. **29**:479.