

DESCRIPTION

Species Reactivity	Human
Specificity	Detects human IL-1ra/IL-1F3 in ELISAs. In ELISAs, this antibody shows less than 0.2% cross-reactivity with recombinant mouse (rm) IL-1ra and no cross-reactivity with rhIL-1 α , rpIL-1 α , rmIL-1 α , rrIL-1 α , rhIL-1 β , rpIL-1 β , rmIL-1 β , rrIL-1 β , rhIL-1 RI, or rhIL-1 RII.
Source	Monoclonal Mouse IgG _{2A} Clone # 10309
Purification	Protein A or G purified from hybridoma culture supernatant
Immunogen	<i>E. coli</i> -derived recombinant human IL-1ra/IL-1F3 Arg26-Glu177 Accession # P18510
Conjugate	Allophycocyanin Excitation Wavelength: 620-650 nm Emission Wavelength: 660-670 nm
Formulation	Supplied in a saline solution containing BSA and Sodium Azide. See Certificate of Analysis for details. *Contains <0.1% Sodium Azide, which is not hazardous at this concentration according to GHS classifications. Refer to the Safety Data Sheet (SDS) for additional information and handling instructions.

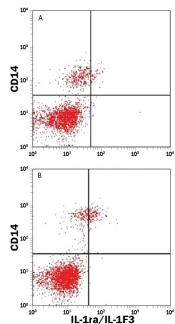
APPLICATIONS

Please Note: Optimal dilutions should be determined by each laboratory for each application. *General Protocols* are available in the *Technical Information* section on our website.

	Recommended Concentration	Sample
Intracellular Staining by Flow Cytometry	10 μ L/10 ⁶ cells	See Below

DATA

Intracellular Staining by Flow Cytometry



Detection of IL-1ra/IL-1F3 in PBMCs by Flow Cytometry. Peripheral Blood Mononuclear Cells (PBMCs) either (A) untreated or (B) treated with LPS were stained with Mouse Anti-Human CD14 Fluorescein-conjugated Monoclonal Antibody (Catalog # [FAB3832F](#)) and Mouse Anti-Human IL-1ra/IL-1F3 APC-conjugated Monoclonal Antibody (Catalog # [IC280A](#)). Quadrant markers were set based on control antibody staining with Mouse IgG_{2A} Allophycocyanin Isotype Control (Catalog # [IC003A](#)). To facilitate intracellular staining, cells were fixed with Flow Cytometry Fixation Buffer (Catalog # [FC004](#)) and permeabilized with Flow Cytometry Permeabilization/Wash Buffer I (Catalog # [FC005](#)). View our protocol for [Staining Intracellular Molecules](#).

PREPARATION AND STORAGE

Shipping The product is shipped with polar packs. Upon receipt, store it immediately at the temperature recommended below.

Stability & Storage **Protect from light. Do not freeze.**

- 12 months from date of receipt, 2 to 8 °C as supplied.

BACKGROUND

IL-1ra was originally isolated from the urine of patients with monocytic leukemia and has also been purified from adherent monocytes. The naturally occurring, fully glycosylated form has an apparent molecular weight of about 25,000 Daltons. The protein shows 26% amino acid homology to IL-1 β and 19% homology to IL-1 α . It will compete with either factor for receptor binding, but does not interact with either one. Human IL-1ra will bind to both types of IL-1 receptor (I and II) on human cells, but reportedly will not block binding to the type II receptor on murine pre-B cell lines. The recombinant, non-glycosylated form of IL-1ra blocks binding of IL-1 to its receptor equally as well as the naturally-occurring, glycosylated form. The IL-1ra has been shown to block the inflammatory responses induced by IL-1 both *in vitro* and *in vivo*.