

DESCRIPTION

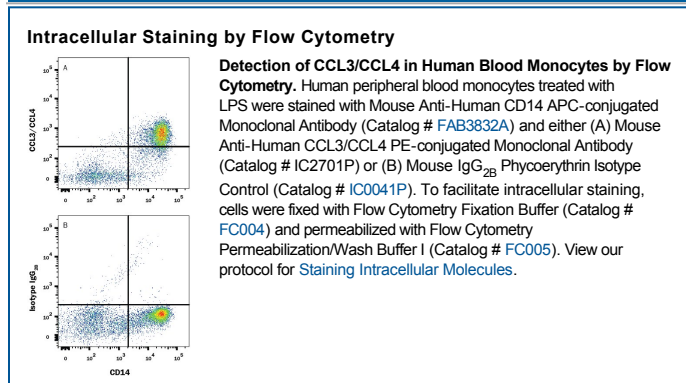
Species Reactivity	Human
Specificity	Detects human CCL3/MIP-1 α in Western blots. In direct ELISAs, 100% cross-reactivity with recombinant human (rh) CCL4/MIP-1 β is observed. Does not cross-react with rhCCL1, 2, 5, 7, 8, 11, 13, 14, 15, 16, 17, 18, 19, 20, 21, 22, 23, 24, 25, 26, recombinant mouse CCL1, 2, 3, 5, 6, 7, CCL9/10MIP-1 γ , 11, 12, 17, 19, 20, 21, 22, 24, 25, or recombinant rat CCL20.
Source	Monoclonal Mouse IgG _{2B} Clone # 93342
Purification	Protein A or G purified from ascites
Immunogen	<i>E. coli</i> -derived recombinant human CCL3/MIP-1 α Ala27-Ala92 Accession # P10147
Conjugate	Phycoerythrin Excitation Wavelength: 488 nm Emission Wavelength: 565-605 nm
Formulation	Supplied in a saline solution containing BSA and Sodium Azide. See Certificate of Analysis for details. *Contains <0.1% Sodium Azide, which is not hazardous at this concentration according to GHS classifications. Refer to the Safety Data Sheet (SDS) for additional information and handling instructions.

APPLICATIONS

Please Note: Optimal dilutions should be determined by each laboratory for each application. *General Protocols* are available in the *Technical Information* section on our website.

	Recommended Concentration	Sample
Intracellular Staining by Flow Cytometry	10 μ L/10 ⁶ cells	See Below

DATA



PREPARATION AND STORAGE

Shipping	The product is shipped with polar packs. Upon receipt, store it immediately at the temperature recommended below.
Stability & Storage	Protect from light. Do not freeze. <ul style="list-style-type: none"> 12 months from date of receipt, 2 to 8 °C as supplied.

BACKGROUND

The Macrophage Inflammatory Proteins -1 α and -1 β were originally co-purified from medium conditioned by an LPS-stimulated murine macrophage cell line. Human MIP-1 α refers to the products of several independently cloned cDNAs, including LD78, pL78, pAT464, and GOS19. These cDNAs all code for the same human protein that is a homologue of the murine MIP-1 α . Mature MIP-1 α and MIP-1 β in both human and mouse share approximately 70% homology at the amino acid level. The MIP-1 proteins are members of the β (C-C) subfamily of chemokines.

Both MIP-1 α and MIP-1 β are monocyte chemoattractants *in vitro*. Additionally, the MIP-1 proteins have been reported to have chemoattractant and adhesive effects on lymphocytes, with MIP-1 α and MIP-1 β preferentially attracting CD8⁺ and CD4⁺ T cells, respectively. MIP-1 α has also been shown to attract B cells as well as eosinophils. MIP-1 proteins have been reported to have multiple effects on hematopoietic precursor cells and MIP-1 α has been identified as a stem cell inhibitory factor that can inhibit the proliferation of hematopoietic stem cells *in vitro* as well as *in vivo*. The functional receptors for MIP-1 α have been identified as CCR1 and CCR5.

References:

1. Menten, P. *et al.* (2002) Cytokine Growth Factor Rev. **13**:455.