

DESCRIPTION

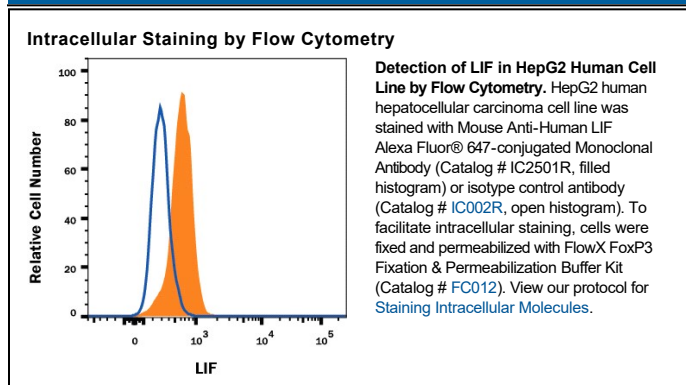
Species Reactivity	Human
Specificity	Detects human LIF in direct ELISAs and Western blots. In direct ELISAs and Western blots, no cross-reactivity with recombinant mouse LIF, recombinant human (rh) CLC, rhCNTF, rhCardiotrophin-1, rhIL-6, rhIL-11, or rhOSM is observed.
Source	Monoclonal Mouse IgG ₁ Clone # 9808
Purification	Protein A or G purified from hybridoma culture supernatant
Immunogen	<i>E. coli</i> -derived recombinant human LIF
Conjugate	Alexa Fluor 647 Excitation Wavelength: 650 nm Emission Wavelength: 668 nm
Formulation	Supplied 0.2 mg/mL in a saline solution containing BSA and Sodium Azide. See Certificate of Analysis for details. *Contains <0.1% Sodium Azide, which is not hazardous at this concentration according to GHS classifications. Refer to the Safety Data Sheet (SDS) for additional information and handling instructions.

APPLICATIONS

Please Note: Optimal dilutions should be determined by each laboratory for each application. [General Protocols](#) are available in the [Technical Information](#) section on our website.

	Recommended Concentration	Sample
Intracellular Staining by Flow Cytometry	0.25-1 µg/10 ⁶ cells	See Below

DATA



PREPARATION AND STORAGE

Shipping	The product is shipped with polar packs. Upon receipt, store it immediately at the temperature recommended below.
Stability & Storage	Protect from light. Do not freeze. <ul style="list-style-type: none"> ● 12 months from date of receipt, 2 to 8 °C as supplied.

BACKGROUND

LIF is a 36-67 kDa highly glycosylated polypeptide (1, 2) produced by a variety of cells including T cells (3), monocytes (4), fibroblasts (5), osteoblasts (6) and mast cells (7). Consistent with its many synonyms, LIF exhibits a broad spectrum of effects on both hematopoietic and nonhematopoietic cells. For example, LIF inhibits the differentiation of embryonic stem cells (8), up regulates the synthesis of acute phase proteins in hepatocytes (9), down regulates lipoprotein lipase activity in adipocytes (10), and preferentially induces a cholinergic phenotype in sympathetic neurons (11). The receptor for LIF (LIF R) has been isolated and found to be a 190 kDa type I transmembrane glycoprotein (12). Although this molecule binds LIF, the resultant LIF-LIF R complex is not sufficient to transduce an intracellular signal. This capability is provided by a 130 kDa signal transducing subunit (gp130) that is common to the functional receptors for IL-6, IL-11, CNTF, and Oncostatin M (13, 14). Since gp130 is a ubiquitously expressed membrane protein, the presence of LIF R (membrane-bound or soluble form) ultimately determines the cell's responsiveness to LIF. Cells known to express LIF R include osteoblasts (6), hepatocytes (15), macrophages (15), neurons (5), and megakaryocytes (16). Human and mouse LIF exhibit 78% sequence homology, and human LIF is biologically active on mouse cells.

References:

1. Van-Vlasselaev, P. *et al.* (1992) *Prog. Growth Factor Res.* **4**:337.
2. Gough, N.M. (1992) *Growth Factors* **7**:175.
3. Anegon, N.M, I. *et al.* (1991) *J. Immunol.* **147**:3973.
4. Gillett, N.A. *et al.* (1993) *Growth Factors* **9**:301.
5. Banner, L. R. and P.H. Patterson (1994) *Proc. Natl. Acad. Sci.* **91**:7109.
6. Allen, E.H. *et al.* (1990) *J. Cell. Physiol.* **145**:110.
7. Lorenzo, J.A. *et al.* (1994) *Clin.Immunol. Immunopathol.* **70**:260.
8. Williams, R.L. *et al.* (1988) *Nature* **336**:684.
9. Baumann, H. *et al.* (1989) *J. Immunol.* **143**:1163.
10. Marshall, M.K. *et al.* (1994) *Endocrinology* **135**:1412.
11. Ludham, W.H. *et al.* (1994) *Dev. Biol.* **164**:5283.
12. Davis, S. *et al.* (1993) *Science* **260**:18054.
13. Gearing, D.P. *et al.* (1991) *EMBO J.* **10**:28395.
14. Gearing, D.P. *et al.* (1991) *Science* **255**:1434.
15. Hilton, D.J. and N.A. Nicola (1992) *J. Biol. Chem.* **267**:102286.
16. Hilton, D.J. *et al.* (1992) *Ciba17. Foundation Symposium* **167**:2278.

PRODUCT SPECIFIC NOTICES

This product is provided under an agreement between Life Technologies Corporation and R&D Systems, Inc, and the manufacture, use, sale or import of this product is subject to one or more US patents and corresponding non-US equivalents, owned by Life Technologies Corporation and its affiliates. The purchase of this product conveys to the buyer the non-transferable right to use the purchased amount of the product and components of the product only in research conducted by the buyer (whether the buyer is an academic or for-profit entity). The sale of this product is expressly conditioned on the buyer not using the product or its components (1) in manufacturing; (2) to provide a service, information, or data to an unaffiliated third party for payment; (3) for therapeutic, diagnostic or prophylactic purposes; (4) to resell, sell, or otherwise transfer this product or its components to any third party, or for any other commercial purpose. Life Technologies Corporation will not assert a claim against the buyer of the infringement of the above patents based on the manufacture, use or sale of a commercial product developed in research by the buyer in which this product or its components was employed, provided that neither this product nor any of its components was used in the manufacture of such product. For information on purchasing a license to this product for purposes other than research, contact Life Technologies Corporation, Cell Analysis Business Unit, Business Development, 29851 Willow Creek Road, Eugene, OR 97402, Tel: (541) 465-8300. Fax: (541) 335-0354.