

DESCRIPTION

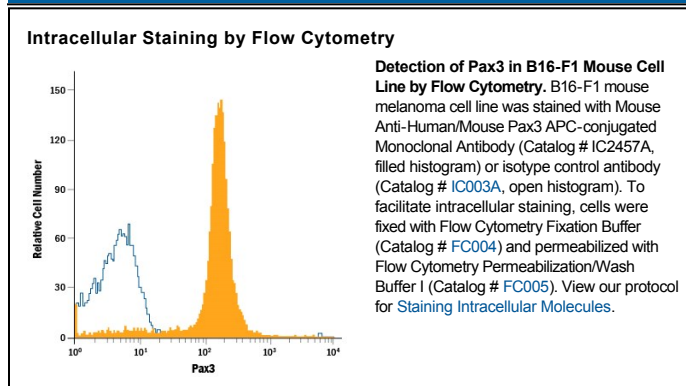
Species Reactivity	Human/Mouse
Specificity	Detects human and mouse Pax3 in direct ELISAs and Western blots.
Source	Monoclonal Mouse IgG _{2A} Clone # 274212
Purification	Protein A or G purified from hybridoma culture supernatant
Immunogen	<i>E. coli</i> -derived recombinant human Pax3 (isoform Pax3a) Met1-Ser215 Accession # NP_000429
Conjugate	Allophycocyanin Excitation Wavelength: 620-650 nm Emission Wavelength: 660-670 nm
Formulation	Supplied in a saline solution containing BSA and Sodium Azide. See Certificate of Analysis for details. *Contains <0.1% Sodium Azide, which is not hazardous at this concentration according to GHS classifications. Refer to the Safety Data Sheet (SDS) for additional information and handling instructions.

APPLICATIONS

Please Note: Optimal dilutions should be determined by each laboratory for each application. *General Protocols* are available in the *Technical Information* section on our website.

	Recommended Concentration	Sample
Intracellular Staining by Flow Cytometry	10 μ L/10 ⁶ cells	See Below

DATA



PREPARATION AND STORAGE

Shipping	The product is shipped with polar packs. Upon receipt, store it immediately at the temperature recommended below.
Stability & Storage	Protect from light. Do not freeze. <ul style="list-style-type: none"> 12 months from date of receipt, 2 to 8 °C as supplied.

BACKGROUND

Pax3 belongs to the family of paired box transcription factors. Pax family proteins typically contain a paired box domain and a paired-type homeodomain. These transcription factors play critical roles during fetal development. Human and mouse Pax3 share 98% amino acid sequence identity.