

DESCRIPTION

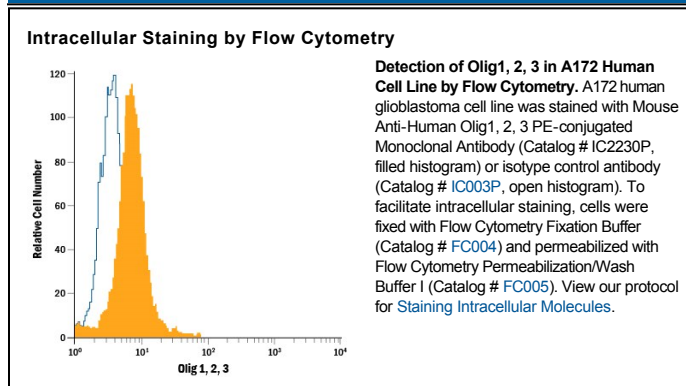
Species Reactivity	Human
Specificity	Detects human Olig1, 2, 3. In direct ELISAs, this antibody shows approximately 20% cross-reactivity with recombinant human (rh) Olig2 and 50-100% cross-reactivity with rhOlig3.
Source	Monoclonal Mouse IgG _{2A} Clone # 257224
Purification	Protein A or G purified from hybridoma culture supernatant
Immunogen	<i>E. coli</i> -derived recombinant human Olig1 aa 1-272
Conjugate	Phycoerythrin Excitation Wavelength: 488 nm Emission Wavelength: 565-605 nm
Formulation	Supplied in a saline solution containing BSA and Sodium Azide. See Certificate of Analysis for details. *Contains <0.1% Sodium Azide, which is not hazardous at this concentration according to GHS classifications. Refer to the Safety Data Sheet (SDS) for additional information and handling instructions.

APPLICATIONS

Please Note: Optimal dilutions should be determined by each laboratory for each application. *General Protocols* are available in the *Technical Information* section on our website.

	Recommended Concentration	Sample
Intracellular Staining by Flow Cytometry	10 μ L/10 ⁶ cells	See Below

DATA



PREPARATION AND STORAGE

Shipping	The product is shipped with polar packs. Upon receipt, store it immediately at the temperature recommended below.
Stability & Storage	Protect from light. Do not freeze. <ul style="list-style-type: none"> 12 months from date of receipt, 2 to 8 °C as supplied.

BACKGROUND

Olig1 and Olig2, which have been implicated in oligodendrogenesis, are expressed in the region of the ventral ventricular zone of late embryonic spinal cord where oligodendrocyte progenitors appear. Olig3 is transiently expressed in different types of progenitors of embryonic central nervous system and then disappears in the course of development. In adults, expression of Olig3 is primarily detected in neural tissues.