

DESCRIPTION

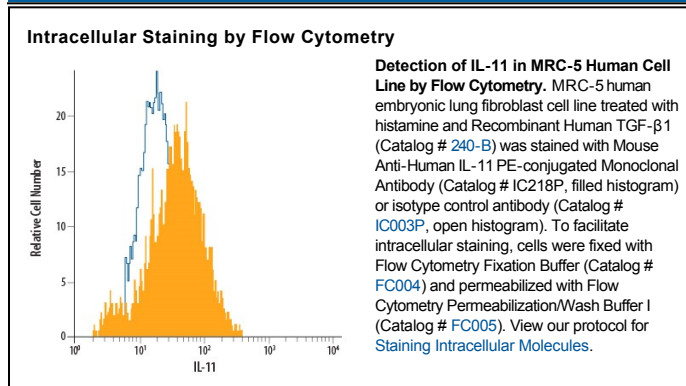
Species Reactivity	Human
Specificity	Detects human IL-11 in direct ELISAs and Western blots. In direct ELISAs and Western blots, 100% cross-reactivity with recombinant mouse IL-11 is observed and no cross-reactivity with recombinant human (rh) IL-6, rhCNTF, rhLIF, rhOSM, rhCLC, or rhCT-1 is observed.
Source	Monoclonal Mouse IgG _{2A} Clone # 22626
Purification	Protein A or G purified from hybridoma culture supernatant
Immunogen	<i>E. coli</i> -derived recombinant human IL-11 Pro22-Leu199 Accession # P20809
Conjugate	Phycoerythrin Excitation Wavelength: 488 nm Emission Wavelength: 565-605 nm
Formulation	Supplied in a saline solution containing BSA and Sodium Azide. See Certificate of Analysis for details. *Contains <0.1% Sodium Azide, which is not hazardous at this concentration according to GHS classifications. Refer to the Safety Data Sheet (SDS) for additional information and handling instructions.

APPLICATIONS

Please Note: Optimal dilutions should be determined by each laboratory for each application. *General Protocols* are available in the *Technical Information* section on our website.

	Recommended Concentration	Sample
Intracellular Staining by Flow Cytometry	10 μ L/10 ⁶ cells	See Below

DATA



PREPARATION AND STORAGE

Shipping	The product is shipped with polar packs. Upon receipt, store it immediately at the temperature recommended below.
Stability & Storage	Protect from light. Do not freeze. <ul style="list-style-type: none"> ● 12 months from date of receipt, 2 to 8 °C as supplied.

BACKGROUND

Interleukin-11 (IL-11) is a pleiotropic cytokine produced by stromal cells. It binds to a dimeric receptor complex consisting of the IL-11 Ra chain and the gp130 chain shared by the receptors for the IL-6 cytokine family. IL-11 has multiple effects on hematopoietic cells and osteoblasts.