

## DESCRIPTION

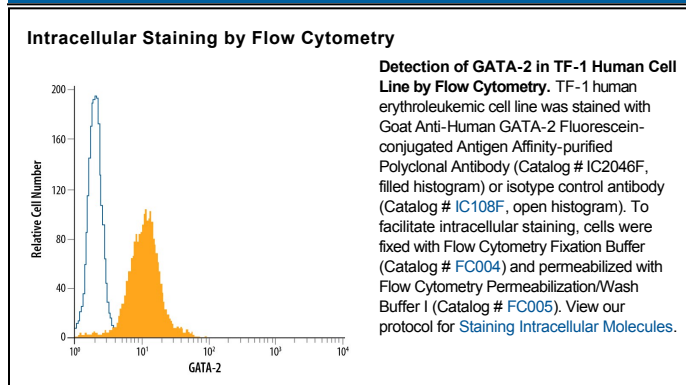
|                           |  |
|---------------------------|--|
| <b>Species Reactivity</b> | Human  |
| <b>Specificity</b>        | Detects human GATA-2. In direct ELISAs and Western blots, this antibody shows less than 1% cross-reactivity with rhGATA-1, rhGATA-5 and rhGATA-6.  |
| <b>Source</b>             | Polyclonal Goat IgG  |
| <b>Purification</b>       | Antigen Affinity-purified  |
| <b>Immunogen</b>          | <i>E. coli</i> -derived recombinant human GATA-2<br>Ala15-Thr279<br>Accession # P23769   |
| <b>Conjugate</b>          | Fluorescein<br>Excitation Wavelength: 488 nm<br>Emission Wavelength: 515-545 nm (FITC)   |
| <b>Formulation</b>        | Supplied in a saline solution containing BSA and Sodium Azide. See Certificate of Analysis for details.<br><br>*Contains <0.1% Sodium Azide, which is not hazardous at this concentration according to GHS classifications. Refer to the Safety Data Sheet (SDS) for additional information and handling instructions. |

## APPLICATIONS

**Please Note:** Optimal dilutions should be determined by each laboratory for each application. *General Protocols* are available in the *Technical Information* section on our website.

|   | Recommended Concentration        | Sample    |
|---|----------------------------------|-----------|
| <b>Intracellular Staining by Flow Cytometry</b> | 10 $\mu$ L/10 <sup>6</sup> cells | See Below |

## DATA



## PREPARATION AND STORAGE

|                                |  |
|--------------------------------|--|
| <b>Shipping</b>                | The product is shipped with polar packs. Upon receipt, store it immediately at the temperature recommended below.                                    |
| <b>Stability &amp; Storage</b> | <b>Protect from light. Do not freeze.</b> <ul style="list-style-type: none"> <li>● 12 months from date of receipt, 2 to 8 °C as supplied.</li> </ul> |

## BACKGROUND

GATA factors constitute a family of transcriptional regulatory factors that bind to the consensus DNA sequence (A/T) GATA (A/G) to control diverse tissue-specific programs of gene expression and morphogenesis. GATA-1/2/3 are each expressed in the hematopoietic system while GATA-4/5/6 are each expressed in the developing heart and in gastrointestinal and gut-derived tissues (1, 2).

### References:

1. Tsai, S.F. *et al.* (1989) *Nature* **339**:446.
2. Jiang, Y. and T. Evans (1996) *Dev. Biol.* **174**:258.