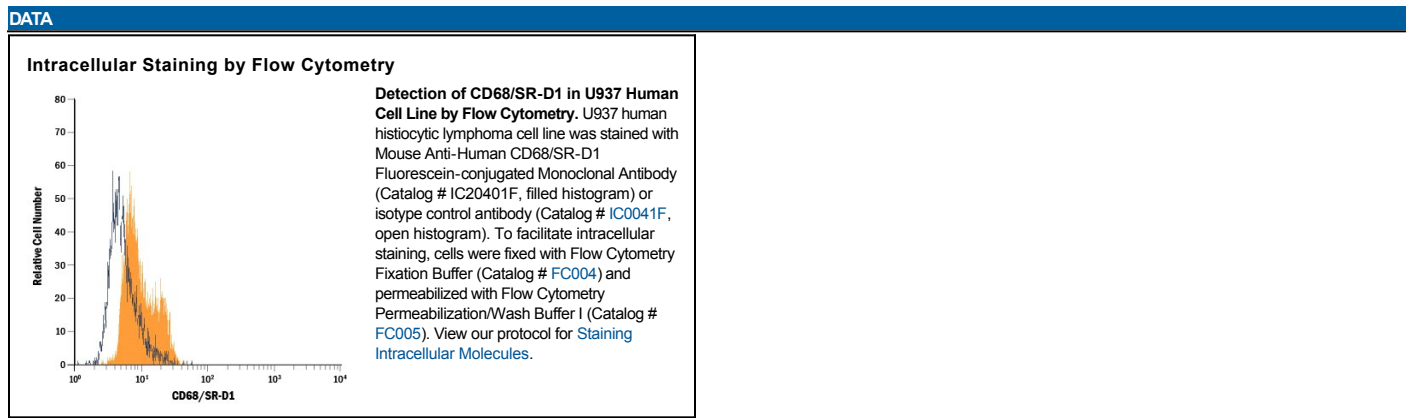


DESCRIPTION	
Species Reactivity	Human
Specificity	Detects human CD68/SR-D1 in direct ELISAs.
Source	Monoclonal Mouse IgG _{2B} Clone # 298807
Purification	Protein A or G purified from hybridoma culture supernatant
Immunogen	Mouse myeloma cell line NS0-derived recombinant human CD68/SR-D1 Asn22-Ile320 Accession # AAB25811
Conjugate	Fluorescein Excitation Wavelength: 488 nm Emission Wavelength: 515-545 nm (FITC)
Formulation	Supplied in a saline solution containing BSA and Sodium Azide. See Certificate of Analysis for details. *Contains <0.1% Sodium Azide, which is not hazardous at this concentration according to GHS classifications. Refer to the Safety Data Sheet (SDS) for additional information and handling instructions.

APPLICATIONS		
<i>Please Note: Optimal dilutions should be determined by each laboratory for each application. General Protocols are available in the Technical Information section on our website.</i>		
	Recommended Concentration	Sample
Intracellular Staining by Flow Cytometry	10 μ L/10 ⁶ cells	See Below



PREPARATION AND STORAGE	
Shipping	The product is shipped with polar packs. Upon receipt, store it immediately at the temperature recommended below.
Stability & Storage	Protect from light. Do not freeze. <ul style="list-style-type: none"> ● 12 months from date of receipt, 2 to 8 °C as supplied.

BACKGROUND
CD68, also known as Scavenger Receptor D1 (SR-D1), is a type I transmembrane glycoprotein that belongs to the LAMP family of molecules. CD68 is expressed on monocytes and macrophages and serves as a scavenger receptor for oxidized LDL.