

DESCRIPTION

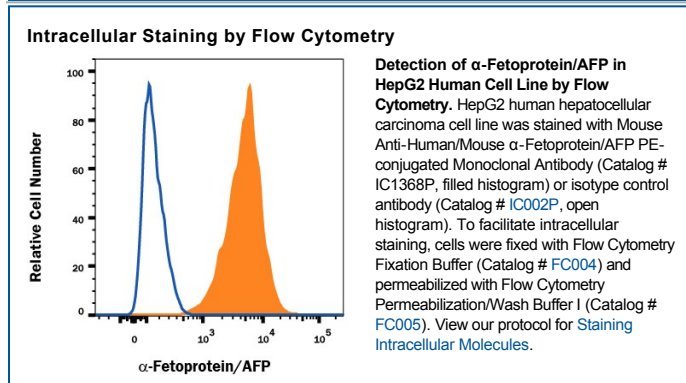
Species Reactivity	Human/Mouse
Specificity	Detects human α -Fetoprotein/AFP in direct ELISAs and Western blots.
Source	Monoclonal Mouse IgG ₁ Clone # 189502
Purification	Protein A or G purified from hybridoma culture supernatant
Immunogen	Human umbilical cord serum-derived α -Fetoprotein/AFP
Conjugate	Phycoerythrin Excitation Wavelength: 488 nm Emission Wavelength: 565-605 nm
Formulation	Supplied in a saline solution containing BSA and Sodium Azide. See Certificate of Analysis for details. *Contains <0.1% Sodium Azide, which is not hazardous at this concentration according to GHS classifications. Refer to the Safety Data Sheet (SDS) for additional information and handling instructions.

APPLICATIONS

Please Note: Optimal dilutions should be determined by each laboratory for each application. *General Protocols* are available in the *Technical Information* section on our website.

	Recommended Concentration	Sample
Intracellular Staining by Flow Cytometry	10 μ L/10 ⁶ cells	See Below

DATA



PREPARATION AND STORAGE

Shipping	The product is shipped with polar packs. Upon receipt, store it immediately at the temperature recommended below.
Stability & Storage	Protect from light. Do not freeze. <ul style="list-style-type: none"> ● 12 months from date of receipt, 2 to 8 °C as supplied.

BACKGROUND

α -Fetoprotein is a major plasma protein in the fetus. Its concentration is normally low in the adult except when produced by certain tumors. AFP is produced by the yolk sac and the liver during fetal development. It is thought to be the fetal form of serum albumin. AFP binds to copper, nickel, fatty acids and bilirubin and can found in mono-, di or trimeric forms.