

## DESCRIPTION

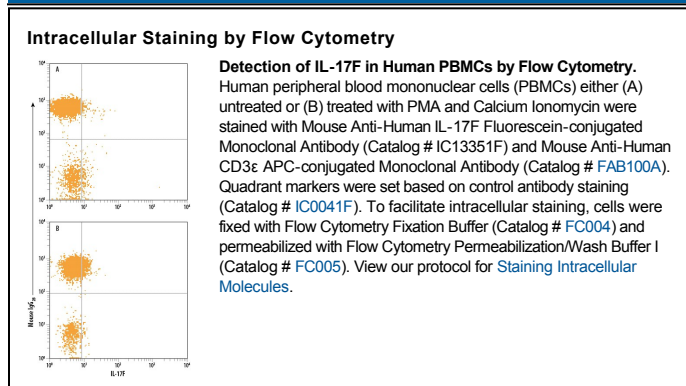
<b>Species Reactivity</b>	Human
<b>Specificity</b>	Detects human IL-17F in direct ELISAs. Does not cross-react with recombinant human IL-17A, B, C, D, or E.
<b>Source</b>	Monoclonal Mouse IgG <sub>2B</sub> Clone # 197301
<b>Purification</b>	Protein A or G purified from hybridoma culture supernatant
<b>Immunogen</b>	<i>E. coli</i> -derived recombinant human IL-17F Arg31-Gln163 Accession # Q96PD4
<b>Conjugate</b>	Fluorescein Excitation Wavelength: 488 nm Emission Wavelength: 515-545 nm (FITC)
<b>Formulation</b>	Supplied in a saline solution containing BSA and Sodium Azide. See Certificate of Analysis for details.  *Contains <0.1% Sodium Azide, which is not hazardous at this concentration according to GHS classifications. Refer to the Safety Data Sheet (SDS) for additional information and handling instructions.

## APPLICATIONS

**Please Note:** Optimal dilutions should be determined by each laboratory for each application. [General Protocols](#) are available in the [Technical Information](#) section on our website.

	Recommended Concentration	Sample
<b>Intracellular Staining by Flow Cytometry</b>	10 $\mu$ L/10 <sup>6</sup> cells	See Below

## DATA



## PREPARATION AND STORAGE

<b>Shipping</b>	The product is shipped with polar packs. Upon receipt, store it immediately at the temperature recommended below.
<b>Stability &amp; Storage</b>	<b>Protect from light. Do not freeze.</b> <ul style="list-style-type: none"> <li>● 12 months from date of receipt, 2 to 8 °C as supplied.</li> </ul>

## BACKGROUND

Interleukin-17F (IL-17F) is a disulfide-linked dimer belonging to the IL-17 family. IL-17 family proteins are pro-inflammatory cytokines that induce local cytokine production and are involved in the regulation of immune functions.