

## DESCRIPTION

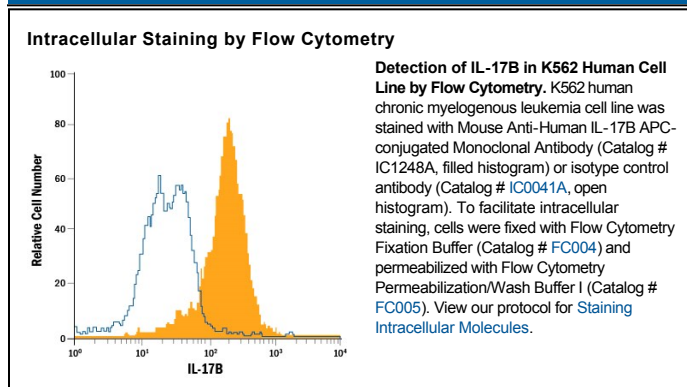
<b>Species Reactivity</b>	Human
<b>Specificity</b>	Detects human IL-17B in Western blots and ELISAs. In Western blots, approximately 25% cross-reactivity with recombinant mouse IL-17B is observed and no cross-reactivity with recombinant human (rh) IL-17, rhIL-17C, rhIL-17E or rhIL-17F is observed.
<b>Source</b>	Monoclonal Mouse IgG <sub>2B</sub> Clone # 174113
<b>Purification</b>	Protein A or G purified from hybridoma culture supernatant
<b>Immunogen</b>	<i>E. coli</i> -derived recombinant human IL-17B Gln21-Phe180 Accession # Q9UHF5
<b>Conjugate</b>	Allophycocyanin Excitation Wavelength: 620-650 nm Emission Wavelength: 660-670 nm
<b>Formulation</b>	Supplied in a saline solution containing BSA and Sodium Azide. See Certificate of Analysis for details.  *Contains <0.1% Sodium Azide, which is not hazardous at this concentration according to GHS classifications. Refer to the Safety Data Sheet (SDS) for additional information and handling instructions.

## APPLICATIONS

**Please Note:** Optimal dilutions should be determined by each laboratory for each application. *General Protocols* are available in the *Technical Information* section on our website.

	<b>Recommended Concentration</b>	<b>Sample</b>
<b>Intracellular Staining by Flow Cytometry</b>	10 $\mu$ L/10 <sup>6</sup> cells	See Below

## DATA



## PREPARATION AND STORAGE

**Shipping** The product is shipped with polar packs. Upon receipt, store it immediately at the temperature recommended below.

**Stability & Storage** **Protect from light. Do not freeze.**

- 12 months from date of receipt, 2 to 8 °C as supplied.

## BACKGROUND

The Interleukin 17 (IL-17) family proteins, comprising six members (IL-17, IL-17B through IL-17F), are secreted, structurally related proteins that share a conserved cystine-knot fold near the C-terminus, but have considerable sequence divergence at the N-terminus (1, 2). With the exception of IL-17B, which exists as a non-covalently linked dimer, all IL-17 family members are disulfide-linked dimers (3). IL-17 family proteins are pro-inflammatory cytokines that induce local cytokine production and are involved in the regulation of immune functions (1, 2). Two receptors (IL-17 R, and IL-17B R), which are activated by IL-17 family members, have been identified. In addition, at least three additional orphan type I transmembrane receptors with homology to IL-17 R, including IL-17 RL (IL-17 RC), IL-17 RD, and IL-17 RE, have also been reported (1-4). Human IL-17B cDNA encodes a 180 amino acid (aa) protein with a putative 20 aa signal peptide (5, 6). Human and mouse IL-17B share 88% amino acid sequence identity. Among IL-17 family members, IL-17B is most closely related to IL-17D, sharing 27% aa sequence homology. IL-17B is expressed highly in spinal cord, and at lower levels in brain, kidney, lung, small intestine, prostate, testes, pancreas, adrenal gland and trachea (5-7). Expression of IL-17B has also been detected in chondrocytes in articular cartilage (2). IL-17B binds the IL-17B receptor but not IL-17 R and exhibits bioactivities distinct from those of IL-17 (5, 6).

## References:

1. Aggarwal, S. and A.L. Gurney (2002) *J. Leukoc. Biol.* **71**:1.
2. Moseley, T.A. *et al.* (2003) *Cytokine & Growth Factor Rev.* **14**:155.
3. Hymowitz, S.G. *et al.* (2001) *EMBO J.* **20**:5332.
4. Haudenschild, D. *et al.* (2002) *J. Biol. Chem.* **277**:4309.
5. Shi, Y. *et al.* (2000) *J. Biol. Chem.* **275**:19167.
6. Li, H. *et al.* (2000) *Proc. Natl. Acad. Sci. USA* **97**:773.
7. Moore, E.E. *et al.* (2002) *Neuromuscul. Disord.* **12**:141.