

## DESCRIPTION

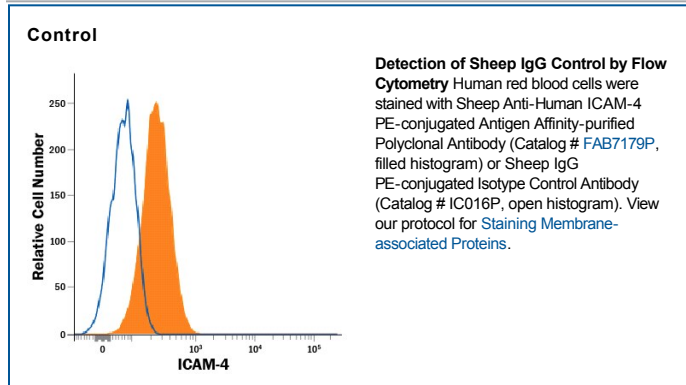
<b>Specificity</b>	Serum was obtained from naive (non-immunized) sheep.
<b>Source</b>	Polyclonal Sheep IgG
<b>Purification</b>	Protein A or G purified
<b>Immunogen</b>	NA
<b>Conjugate</b>	Phycoerythrin Excitation Wavelength: 488 nm Emission Wavelength: 565-605 nm
<b>Formulation</b>	Supplied in a saline solution containing BSA and Sodium Azide. See Certificate of Analysis for details.  *Contains <0.1% Sodium Azide, which is not hazardous at this concentration according to GHS classifications. Refer to the Safety Data Sheet (SDS) for additional information and handling instructions.

## APPLICATIONS

**Please Note:** Optimal dilutions should be determined by each laboratory for each application. *General Protocols* are available in the *Technical Information* section on our website.

Negative control for use in conjunction with R&D Systems antibodies. This isotype control has been derivatized with a quantity of fluorochrome that matched the F/P (fluorochrome/protein) ratio of R&D Systems specific polyclonal antibodies. The recommended concentration is 10  $\mu$ L/10<sup>6</sup> cells.

## DATA



## PREPARATION AND STORAGE

**Shipping** The product is shipped with polar packs. Upon receipt, store it immediately at the temperature recommended below.

**Stability & Storage** **Protect from light. Do not freeze.**

- 12 months from date of receipt, 2 to 8 °C as supplied.