

## DESCRIPTION

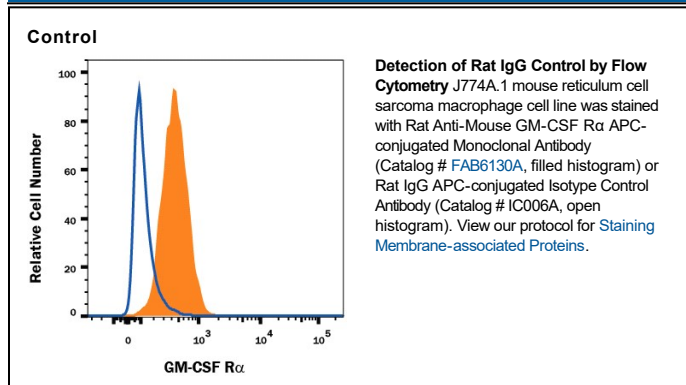
|                     |  |
|---------------------|--|
| <b>Specificity</b>  | Selected for use as rat IgG <sub>2A</sub> isotype control for flow cytometry applications.   |
| <b>Source</b>       | Monoclonal Rat IgG <sub>2A</sub> Clone # 54447   |
| <b>Purification</b> | Protein A or G purified from hybridoma culture supernatant   |
| <b>Immunogen</b>    | KLH  |
| <b>Conjugate</b>    | Allophycocyanin<br>Excitation Wavelength: 620-650 nm<br>Emission Wavelength: 660-670 nm  |
| <b>Formulation</b>  | Supplied in a saline solution containing BSA and Sodium Azide. See Certificate of Analysis for details.<br><br>*Contains <0.1% Sodium Azide, which is not hazardous at this concentration according to GHS classifications. Refer to the Safety Data Sheet (SDS) for additional information and handling instructions. |

## APPLICATIONS

**Please Note:** Optimal dilutions should be determined by each laboratory for each application. *General Protocols* are available in the *Technical Information* section on our website.

Negative control for use in conjunction with R&D Systems antibodies. This isotype control has been derivatized with a quantity of fluorochrome that matched the F/P (fluorochrome/protein) ratio of R&D Systems monoclonal reagents. The recommended concentration is 10 µL/10<sup>6</sup> cells.

## DATA



## PREPARATION AND STORAGE

**Shipping** The product is shipped with polar packs. Upon receipt, store it immediately at the temperature recommended below.

**Stability & Storage** **Protect from light. Do not freeze.**

- 12 months from date of receipt, 2 to 8 °C as supplied.