

DESCRIPTION

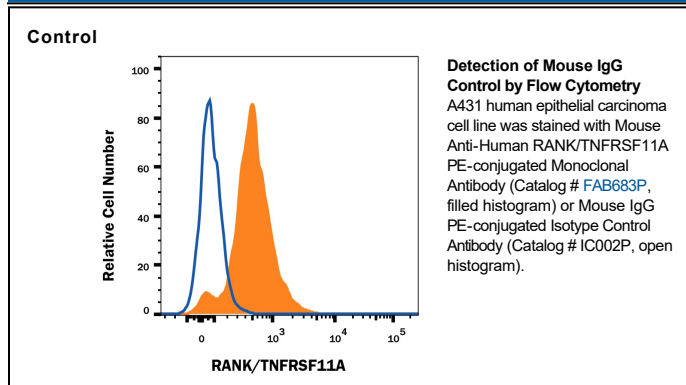
Specificity	Selected for use as mouse IgG ₁ isotype control for flow cytometry applications.
Source	Monoclonal Mouse IgG ₁ κ Clone # 11711
Purification	Protein A or G purified from hybridoma culture supernatant
Immunogen	KLH
Conjugate	Phycoerythrin Excitation Wavelength: 488 nm Emission Wavelength: 565-605 nm
Formulation	Supplied in a saline solution containing BSA and Sodium Azide. See Certificate of Analysis for details. *Contains <0.1% Sodium Azide, which is not hazardous at this concentration according to GHS classifications. Refer to the Safety Data Sheet (SDS) for additional information and handling instructions.

APPLICATIONS

Please Note: Optimal dilutions should be determined by each laboratory for each application. *General Protocols* are available in the *Technical Information* section on our website.

Negative control for use in conjunction with R&D Systems antibodies. This isotype control has been derivatized with a quantity of fluorochrome that matched the F/P (fluorochrome/protein) ratio of R&D Systems monoclonal reagents. The recommended concentration is 10 μL/10⁶ cells.

DATA



PREPARATION AND STORAGE

Shipping The product is shipped with polar packs. Upon receipt, store it immediately at the temperature recommended below.

Stability & Storage **Protect from light. Do not freeze.**

- 12 months from date of receipt, 2 to 8 °C as supplied.