

DESCRIPTION

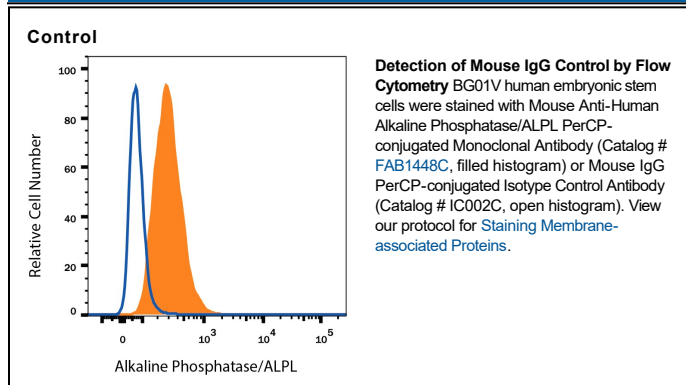
| | |
|---------------------|--|
| Specificity | Selected for use as mouse IgG ₁ isotype control for flow cytometry applications. |
| Source | Monoclonal Mouse IgG ₁ κ Clone # 11711 |
| Purification | Protein A or G purified from hybridoma culture supernatant |
| Immunogen | KLH |
| Conjugate | PerCP (Peridinin-chlorophyll Protein Complex) Excitation Wavelength: 482 and 564 nm Emission Wavelength: 675 nm |
| Formulation | Supplied in a saline solution containing BSA and Sodium Azide. See Certificate of Analysis for details. *Contains <0.1% Sodium Azide, which is not hazardous at this concentration according to GHS classifications. Refer to the Safety Data Sheet (SDS) for additional information and handling instructions. |

APPLICATIONS

Please Note: Optimal dilutions should be determined by each laboratory for each application. *General Protocols* are available in the *Technical Information* section on our website.

Negative control for use in conjunction with R&D Systems antibodies. This isotype control has been derivatized with a quantity of fluorochrome that matched the F/P (fluorochrome/protein) ratio of R&D Systems monoclonal reagents. The recommended concentration is 10 μL/10⁶ cells.

DATA



PREPARATION AND STORAGE

| | |
|--------------------------------|---|
| Shipping | The product is shipped with polar packs. Upon receipt, store it immediately at the temperature recommended below. |
| Stability & Storage | Protect from light. Do not freeze. ● 12 months from date of receipt, 2 to 8 °C as supplied. |