

## DESCRIPTION

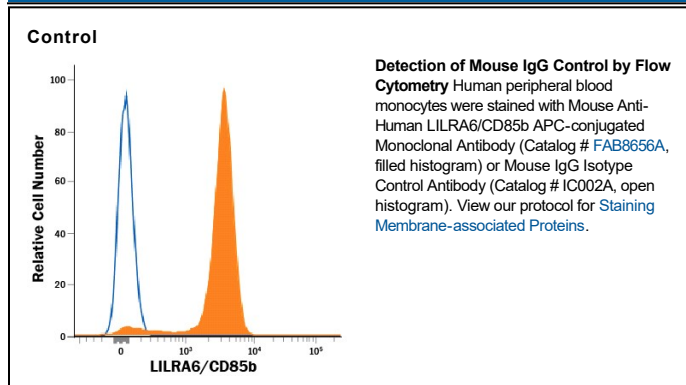
<b>Specificity</b>	Selected for use as mouse IgG <sub>1</sub> isotype control for flow cytometry applications.
<b>Source</b>	Monoclonal Mouse IgG <sub>1</sub> κ Clone # 11711
<b>Purification</b>	Protein A or G purified from hybridoma culture supernatant
<b>Immunogen</b>	KLH
<b>Conjugate</b>	Allophycocyanin Excitation Wavelength: 620-650 nm Emission Wavelength: 660-670 nm
<b>Formulation</b>	Supplied in a saline solution containing BSA and Sodium Azide. See Certificate of Analysis for details.  *Contains <0.1% Sodium Azide, which is not hazardous at this concentration according to GHS classifications. Refer to the Safety Data Sheet (SDS) for additional information and handling instructions.

## APPLICATIONS

**Please Note:** Optimal dilutions should be determined by each laboratory for each application. *General Protocols* are available in the *Technical Information* section on our website.

Negative control for use in conjunction with R&D Systems antibodies. This isotype control has been derivatized with a quantity of fluorochrome that matched the F/P (fluorochrome/protein) ratio of R&D Systems monoclonal reagents. The recommended concentration is 10 μL/10<sup>6</sup> cells.

## DATA



## PREPARATION AND STORAGE

<b>Shipping</b>	The product is shipped with polar packs. Upon receipt, store it immediately at the temperature recommended below.
<b>Stability &amp; Storage</b>	<b>Protect from light. Do not freeze.</b> ● 12 months from date of receipt, 2 to 8 °C as supplied.