

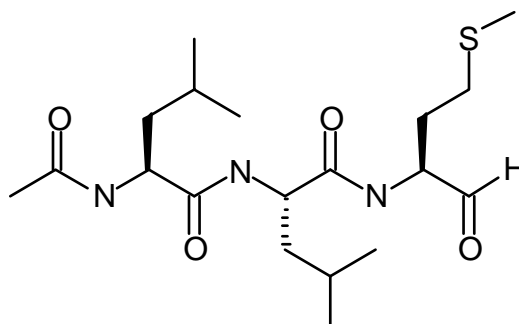
MATERIAL DATA SHEET

Ac-Leu-Leu-Met-CHO (Ac-LLM-CHO)

Cat. # I-170

Peptide aldehydes form a covalent hemiacetal adduct with the 20S proteasome, inhibiting the chymotrypsin-like peptidase activity. These inhibitors are reversible and cell-permeable, and also inhibit the activity of calpains and cathepsins.

Product Information

Quantity: 5 mg**Formula:** C₁₉H₃₅N₃O₄S **FW:** 401.57**Structure:**

Physical/Chemical Characteristics

Solubility: Soluble in DMSO up to 15 mg/ml. Pellet dry compound prior to DMSO addition.**Purity:** >95% by HPLC and TLC. Structure confirmed by NMR.

Use & Storage

Use: Add from DMSO stock directly to *in vitro* or *in vivo* assay at desired concentration. Pre-incubation with compound prior to assay is recommended for maximal effect.**Storage:** Store DMSO stock at -20°C. Avoid multiple freeze/thaw cycles.

Literature

References: Griscavage, J.M., *et al.* (1995) Biochem. Biophys. Res. Comm. **215**:721729
Kisselev A.F., *et al.* (2003) J. Biol. Chem. **278**:35869-35877
Mellgren R.L. (1997) J. Biol. Chem. **272**:29899-29903
Myung J., *et al.* (2001) Med. Res. Rev. **4**:245-273
Vinitsky A., *et al.* (1994) J. Biol. Chem. **269**:29860-29860

For Laboratory Research Use Only, Not For Use in Humans