

DESCRIPTION

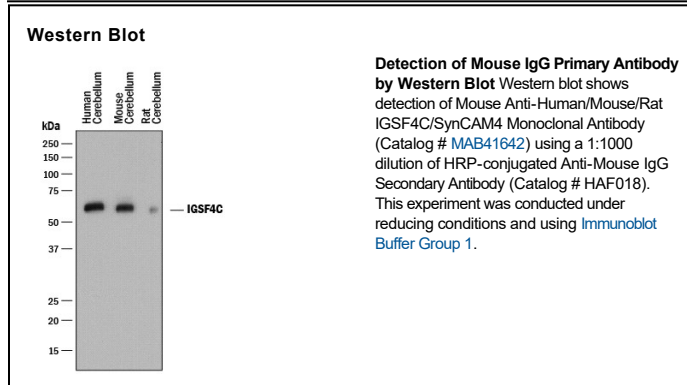
Species Reactivity	Mouse
Specificity	Detects mouse IgG ₁ , IgG _{2A} , IgG _{2B} , and IgG ₃ heavy and light chains in direct ELISAs and Western blots. In direct ELISAs, less than 5% cross-reactivity with human IgG, rabbit IgG and chicken IgY is observed.
Source	Polyclonal Donkey IgG
Purification	Antigen Affinity-purified
Immunogen	Mouse IgG
Formulation	Supplied as a 0.2 µm filtered solution in PBS with stabilizers. See Certificate of Analysis for details.

APPLICATIONS

Please Note: Optimal dilutions should be determined by each laboratory for each application. General Protocols are available in the Technical Information section on our website.

Western Blot	Use at a 1:1000 dilution.
---------------------	---------------------------

DATA



PREPARATION AND STORAGE

Shipping	The product is shipped with polar packs. Upon receipt, store it immediately at the temperature recommended below.
Stability & Storage	Do not freeze. <ul style="list-style-type: none"> ● 6 months from date of receipt, 2 to 8 °C as supplied.