

## DESCRIPTION

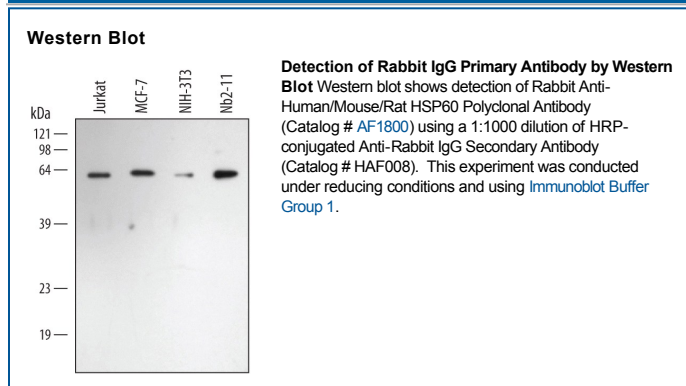
<b>Species Reactivity</b>	Rabbit
<b>Specificity</b>	Detects rabbit IgG heavy and light chains in direct ELISAs and Western blots. In direct ELISAs, less than 5% cross-reactivity with human IgG, mouse IgG, and chicken IgY is observed.
<b>Source</b>	Polyclonal Goat IgG
<b>Purification</b>	Antigen Affinity-purified
<b>Immunogen</b>	Rabbit IgG
<b>Formulation</b>	Supplied as a 0.2 um filtered solution in Sodium Phosphate and Proclin 300. See Certificate of Analysis for details.

## APPLICATIONS

**Please Note:** Optimal dilutions should be determined by each laboratory for each application. *General Protocols* are available in the *Technical Information* section on our website.

**Western Blot** Use at a 1:1000 dilution.

## DATA



## PREPARATION AND STORAGE

**Shipping** The product is shipped with polar packs. Upon receipt, store it immediately at the temperature recommended below.

**Stability & Storage** **Do not freeze.**

- 6 months from date of receipt, 2 to 8 °C as supplied.