

## DESCRIPTION

<b>Species Reactivity</b>	Rat
<b>Specificity</b>	Detects rat IgG <sub>1</sub> , IgG <sub>2A</sub> , IgG <sub>2B</sub> heavy and light chains in direct ELISAs and Western blots. In direct ELISAs, less than 1% cross-reactivity with human IgG and rabbit IgG is observed.
<b>Source</b>	Polyclonal Goat IgG
<b>Purification</b>	Antigen Affinity-purified
<b>Immunogen</b>	Rat IgG
<b>Formulation</b>	Supplied as a 0.2 um filtered solution in Sodium Phosphate and Proclin 300. See Certificate of Analysis for details.

## APPLICATIONS

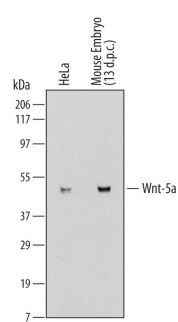
**Please Note:** Optimal dilutions should be determined by each laboratory for each application. General Protocols are available in the Technical Information section on our website.

**Western Blot** Use at a 1:1000 dilution.

**Simple Western** Use at a 1:50 dilution.

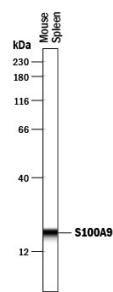
## DATA

### Western Blot



**Detection of Rat IgG Primary Antibody by Western Blot**  
Western blot shows detection of Rat Anti-Human/Mouse Wnt-5a Monoclonal Antibody (Catalog # [MAB645](#)) using a 1:1000 dilution of HRP-conjugated Anti-Rat IgG Secondary Antibody (Catalog # HAF005). This experiment was conducted under reducing conditions and using [Immunoblot Buffer Group 1](#).

### Simple Western



**Detection of Rat IgG Primary Antibody by Simple Western™.** Simple Western lane view shows detection of Rat Anti-Mouse S100A9 Monoclonal Antibody (Catalog # [MAB2065](#)) using a 1:50 dilution of HRP-conjugated Anti-Rat IgG Secondary Antibody (Catalog # HAF005). This experiment was conducted under reducing conditions and using the 12-230 kDa separation system.



## PREPARATION AND STORAGE

**Shipping** The product is shipped with polar packs. Upon receipt, store it immediately at the temperature recommended below.

**Stability & Storage** Do not freeze.

- 6 months from date of receipt, 2 to 8 °C as supplied.