

Human CD52 (Research Grade Alemtuzumab Biosimilar) Biotinylated Antibody

Recombinant Monoclonal Human IgG₁ Clone # Hu116

Catalog Number: FAB9889B

DESCRIPTION

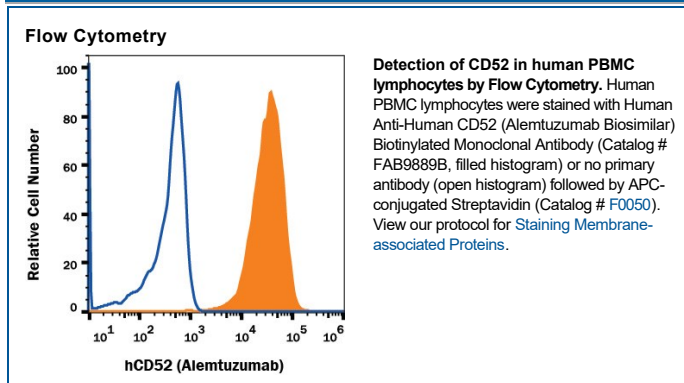
Species Reactivity	Human
Specificity	Detects human CD52 based on Alemtuzumab therapeutic antibody. This non-therapeutic antibody uses the same variable region sequence as the therapeutic antibody Alemtuzumab. This product is for research use only.
Source	Recombinant Monoclonal Human IgG ₁ Clone # Hu116
Purification	Protein A or G purified from cell culture supernatant
Immunogen	Human CD52
Conjugate	Biotin Excitation Wavelength: N/A nm Emission Wavelength: N/A nm
Formulation	Supplied in a saline solution containing BSA and Sodium Azide. See Certificate of Analysis for details. *Contains <0.1% Sodium Azide, which is not hazardous at this concentration according to GHS classifications. Refer to the Safety Data Sheet (SDS) for additional information and handling instructions.

APPLICATIONS

Please Note: Optimal dilutions should be determined by each laboratory for each application. *General Protocols* are available in the *Technical Information* section on our website.

	Recommended Concentration	Sample
Flow Cytometry	10 µL/10 ⁶ cells	See Below

DATA



PREPARATION AND STORAGE

Shipping The product is shipped with polar packs. Upon receipt, store it immediately at the temperature recommended below.

Stability & Storage **Do not freeze.**

- 12 months from date of receipt, 2 to 8 °C as supplied.

BACKGROUND

Alemtuzumab is a biosimilar directed against the extracellular domain of CD52. This product can be used in flow cytometry or various assay format to measure CD52 expression.