

## DESCRIPTION

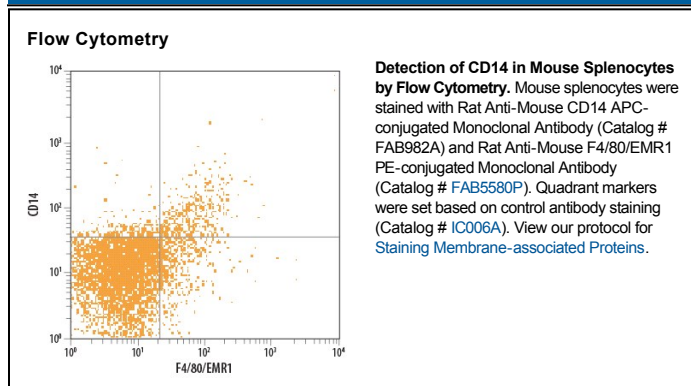
|                           |  |
|---------------------------|--|
| <b>Species Reactivity</b> | Mouse  |
| <b>Specificity</b>        | Detects mouse CD14 in direct ELISAs and Western blots. In direct ELISAs and Western blots, approximately 10% cross-reactivity with recombinant human CD14 is observed.   |
| <b>Source</b>             | Monoclonal Rat IgG <sub>2A</sub> Clone # 159010  |
| <b>Purification</b>       | Protein A or G purified from hybridoma culture supernatant   |
| <b>Immunogen</b>          | Mouse myeloma cell line NS0-derived recombinant mouse CD14<br>Ala18-Pro345 (predicted)<br>Accession # P10810   |
| <b>Conjugate</b>          | Allophycocyanin<br>Excitation Wavelength: 620-650 nm<br>Emission Wavelength: 660-670 nm  |
| <b>Formulation</b>        | Supplied in a saline solution containing BSA and Sodium Azide. See Certificate of Analysis for details.<br><br>*Contains <0.1% Sodium Azide, which is not hazardous at this concentration according to GHS classifications. Refer to the Safety Data Sheet (SDS) for additional information and handling instructions. |

## APPLICATIONS

**Please Note:** Optimal dilutions should be determined by each laboratory for each application. *General Protocols* are available in the *Technical Information* section on our website.

|                       | Recommended Concentration        | Sample    |
|-----------------------|----------------------------------|-----------|
| <b>Flow Cytometry</b> | 10 $\mu$ L/10 <sup>6</sup> cells | See Below |

## DATA



## PREPARATION AND STORAGE

|                                |   |
|--------------------------------|---|
| <b>Shipping</b>                | The product is shipped with polar packs. Upon receipt, store it immediately at the temperature recommended below. |
| <b>Stability &amp; Storage</b> | <b>Protect from light. Do not freeze.</b><br>● 12 months from date of receipt, 2 to 8 °C as supplied.             |

## BACKGROUND

CD14 is a 55 kDa cell surface glycoprotein that is preferentially expressed on monocytes/macrophages. The mouse CD14 cDNA encodes a 366 amino acid (aa) residue precursor protein with a 15 aa signal peptide and a C-terminal hydrophobic region characteristic for glycosylphosphatidylinositol (GPI)-anchored proteins. Mouse CD14 has five potential N-linked glycosylation sites and also bears O-linked carbohydrates. The amino acid sequence of mouse CD14 is approximately 65% and 82% identical to the human and rat proteins, respectively. CD14 is a pattern recognition receptor that binds lipopolysaccharides (LPS) and a variety of ligands derived from different microbial sources. The binding of CD14 with LPS is catalyzed by LPS-binding protein (LBP). The toll-like-receptors have also been implicated in the transduction of CD14-LPS signals. Similar to other GPI-anchored proteins, soluble CD14 can be released from the cell surface by phosphatidylinositol-specific phospholipase C. Soluble CD14 has been detected in serum and body fluids. High concentrations of soluble CD14 have been shown to inhibit LPS-mediated responses. However, soluble CD14 can also potentiate LPS response in cells that do not express cell surface CD14.

### References:

1. Wright, S.D. *et al.* (1990) *Science* **249**:1431.
2. Pugin, J. *et al.* (1993) *Proc. Natl. Acad. Sci. USA* **90**:2744.
3. Beutler, B. (2000) *Current Opinion in Immunology* **12**:20.
4. Stelter, F. (2000) *Chem. Immunol.* **74**:25.