

DESCRIPTION

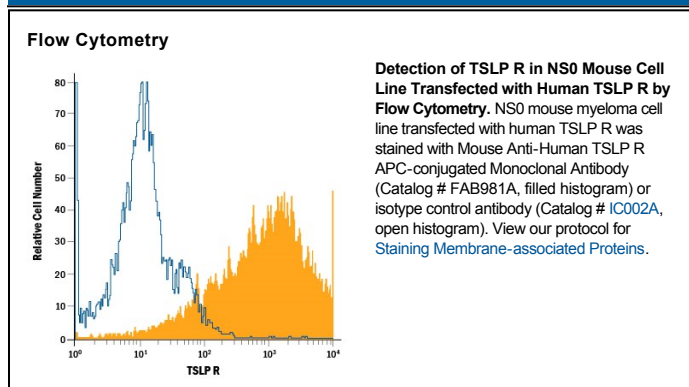
Species Reactivity	Human
Specificity	Detects human TSLP R in direct ELISAs and Western blots. Does not cross-react with recombinant mouse TSLP R.
Source	Monoclonal Mouse IgG ₁ Clone # 147036
Purification	Protein A or G purified from hybridoma culture supernatant
Immunogen	Mouse myeloma cell line NS0-derived recombinant human TSLP R Gly25-Lys231 Accession # Q9HC73
Conjugate	Allophycocyanin Excitation Wavelength: 620-650 nm Emission Wavelength: 660-670 nm
Formulation	Supplied in a saline solution containing BSA and Sodium Azide. See Certificate of Analysis for details. *Contains <0.1% Sodium Azide, which is not hazardous at this concentration according to GHS classifications. Refer to the Safety Data Sheet (SDS) for additional information and handling instructions.

APPLICATIONS

Please Note: Optimal dilutions should be determined by each laboratory for each application. *General Protocols* are available in the *Technical Information* section on our website.

	Recommended Concentration	Sample
Flow Cytometry	10 µL/10 ⁶ cells	See Below

DATA



PREPARATION AND STORAGE

Shipping	The product is shipped with polar packs. Upon receipt, store it immediately at the temperature recommended below.
Stability & Storage	Protect from light. Do not freeze. ● 12 months from date of receipt, 2 to 8 °C as supplied.

BACKGROUND

TSLP R, also named Delta (1) and CRLM-2 (2) (Cytokine Receptor-Like Module-2), was originally cloned as a novel type 1 cytokine receptor with similarity to the common gamma chain. It was subsequently identified to be a subunit of the cellular receptor for the IL-7-like cytokine TSLP and termed TSLP R (3). The human TSLP R cDNA encodes a 371 amino acid (aa) residue type 1 membrane protein with a 22 aa residue signal peptide, a 210 aa residue extracellular domain, a 20 aa residue transmembrane domain, and a 119 aa residue cytoplasmic domain (4, 5). The extracellular region contains two fibronectin type III-like domains and a WSXWS-like motif. The cytoplasmic domain contains a membrane-proximal box 1 motif that is known to be important for association with JAKs (4). Human TSLP R displays 39% identity to mouse TSLP R and 24% identity to the common gamma receptor (4). An alternatively spliced mRNA variant encoding a soluble TSLP R has also been reported in mouse (2). TSLP R expression is ubiquitous in the immune and hematopoietic cells, but is up-regulated in Th2-skewed cells. Cells expressing TSLP R alone bind TSLP with low affinity. Co-expression of TSLP R and IL-7 R α is required for high-affinity TSLP binding and signal transduction (3-6). The TSLP R and IL-7 R α are co-expressed primarily on monocytes and dendritic cells and at lower levels in lymphoid cells. TSLP has been shown to induce the release of T cell-attracting chemokines from monocytes and enhance the maturation of CD11c⁺ dendritic cells (5).

References:

1. Fujio, K. *et al.* (2000) *Blood* **95**:2204.
2. Hiroyama, T. *et al.* (2000) *Biochem. Biophys. Res. Commun.* **272**:224.
3. Park, L.S. *et al.* (2000) *J. Exp. Med.* **192**:659.
4. Tonozuka, Y. *et al.* (2001) *Cytogenet. Cell Genet.* **93**:23.
5. Reche, P.A. *et al.* (2001) *J. Immunol.* **167**:336.
6. Pandey, A. *et al.* (2000) *Nat. Immunol.* **1**:59.