

DESCRIPTION

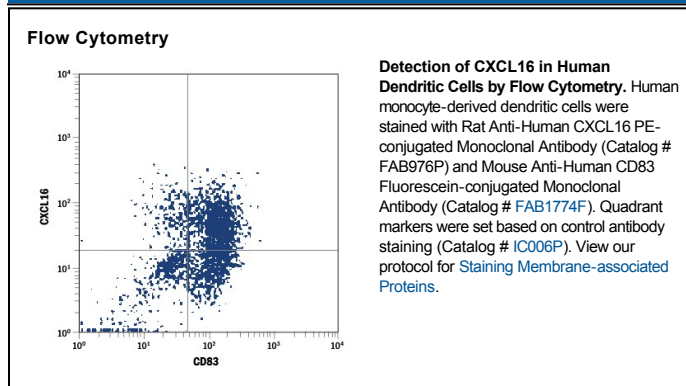
Species Reactivity	Human
Specificity	Detects human CXCL16 in direct ELISAs and Western blots. In Western blots, no cross-reactivity with recombinant human CXCL1, 2, 3, 5, 6, 7, 8, 9, 10, 11, 12/SDF-1 α , 12/SDF-1 β , 13, recombinant mouse CXCL1, 2, 6, 9, 10, 12/SDF-1 α , 13, 16, recombinant rat CXCL1, 2, 3/CINC-2 α , 3/CINC-2 β , recombinant canine CXCL8, or recombinant porcine CXCL8 is observed.
Source	Monoclonal Rat IgG _{2A} Clone # 256213
Purification	Protein A or G purified from hybridoma culture supernatant
Immunogen	<i>E. coli</i> -derived recombinant human CXCL16 Asn49-Pro137 Accession # NP_071342
Conjugate	Phycoerythrin Excitation Wavelength: 488 nm Emission Wavelength: 565-605 nm
Formulation	Supplied in a saline solution containing BSA and Sodium Azide. See Certificate of Analysis for details. *Contains <0.1% Sodium Azide, which is not hazardous at this concentration according to GHS classifications. Refer to the Safety Data Sheet (SDS) for additional information and handling instructions.

APPLICATIONS

Please Note: Optimal dilutions should be determined by each laboratory for each application. [General Protocols](#) are available in the [Technical Information](#) section on our website.

	Recommended Concentration	Sample
Flow Cytometry	10 μ L/10 ⁶ cells	See Below

DATA



PREPARATION AND STORAGE

Shipping	The product is shipped with polar packs. Upon receipt, store it immediately at the temperature recommended below.
Stability & Storage	Protect from light. Do not freeze. <ul style="list-style-type: none"> 12 months from date of receipt, 2 to 8 °C as supplied.

BACKGROUND

CXCL16 is a transmembrane protein with an extracellular domain consisting of a chemokine domain suspended on a mucin-like stalk. It functions as a ligand for the HIV co-receptor, CXCR6 (Bonzo).