

# Human Siglec-3/CD33 (Research Grade Gemtuzumab Biosimilar) Biotinylated Antibody

Recombinant Monoclonal Human IgG<sub>1</sub> Clone # Hu9a

Catalog Number: FAB9635B

## DESCRIPTION

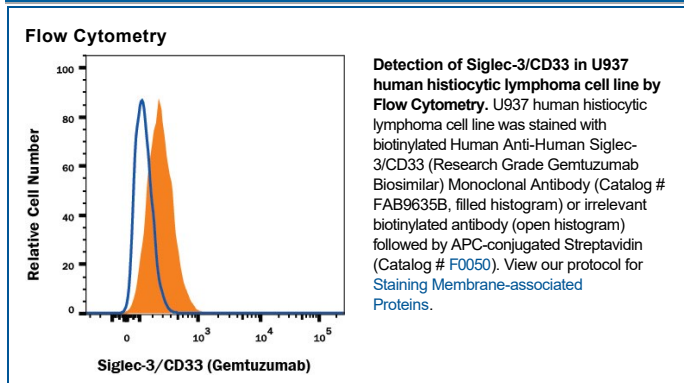
<b>Species Reactivity</b>	Human
<b>Specificity</b>	Detects human Siglec-3/CD33 based on Gemtuzumab therapeutic antibody. This non-therapeutic antibody uses the same variable region sequence as the therapeutic antibody Gemtuzumab. This product is for research use only.
<b>Source</b>	Recombinant Monoclonal Human IgG <sub>1</sub> Clone # Hu9a
<b>Purification</b>	Protein A or G purified from cell culture supernatant
<b>Immunogen</b>	Human Siglec-3/CD33
<b>Conjugate</b>	Biotin Excitation Wavelength: N/A nm Emission Wavelength: N/A nm
<b>Formulation</b>	Supplied in a saline solution containing BSA and Sodium Azide. See Certificate of Analysis for details.  *Contains <0.1% Sodium Azide, which is not hazardous at this concentration according to GHS classifications. Refer to the Safety Data Sheet (SDS) for additional information and handling instructions.

## APPLICATIONS

**Please Note:** Optimal dilutions should be determined by each laboratory for each application. *General Protocols* are available in the *Technical Information* section on our website.

	<b>Recommended Concentration</b>	<b>Sample</b>
<b>Flow Cytometry</b>	0.25 µg/10 <sup>6</sup> cells	See Below

## DATA



## PREPARATION AND STORAGE

**Shipping** The product is shipped with polar packs. Upon receipt, store it immediately at the temperature recommended below.

**Stability & Storage** **Do not freeze.**

- 12 months from date of receipt, 2 to 8 °C as supplied.

## BACKGROUND

Gemtuzumab is a biosimilar directed against the extracellular domain of CD33. This biotinylated antibody can be used in flow cytometry or various assay format to measure Siglec-3/CD33 expression and can be detected by conjugated streptavidin.