

## DESCRIPTION

<b>Specificity</b>	Detects Cetuximab in Western blots and direct ELISAs. No cross-reactivity with Adalimumab, Rituximab, Trastuzumab, Brentuximab, Gemtuzumab, Ibritumomab, Tositumomab, Solanezumab, Teprotumumab, and Aducanumab is observed.
<b>Source</b>	Recombinant Monoclonal Rabbit IgG Clone # 2259C
<b>Purification</b>	Protein A or G purified from cell culture supernatant
<b>Immunogen</b>	Full length Cetuximab
<b>Conjugate</b>	Phycoerythrin Excitation Wavelength: 488 nm Emission Wavelength: 565-605 nm
<b>Formulation</b>	Supplied 0.2 mg/mL in a saline solution containing BSA and Sodium Azide. See Certificate of Analysis for details.  *Contains <0.1% Sodium Azide, which is not hazardous at this concentration according to GHS classifications. Refer to the Safety Data Sheet (SDS) for additional information and handling instructions.

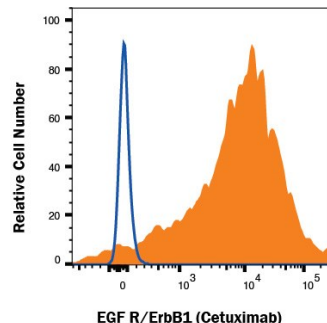
## APPLICATIONS

**Please Note:** Optimal dilutions should be determined by each laboratory for each application. *General Protocols* are available in the Technical Information section on our website.

	<b>Recommended Concentration</b>	<b>Sample</b>
<b>Flow Cytometry</b>	10 µL/10 <sup>6</sup> cells	A431 human epithelial carcinoma cell line

## DATA

### Flow Cytometry



**Detection of Anti-EGFR (Cetuximab) on A431 cells by Flow Cytometry.** A431 cells were stained with Human Anti-Human EGFR (Research Grade Cetuximab Biosimilar) Monoclonal Antibody (Catalog # [MAB9577](#), filled histogram) or isotype control antibody (Catalog # [1-001-A](#), open histogram), followed by Rabbit Anti-Cetuximab (Anti-Idiotypic) PE monoclonal antibody (Catalog # FAB9626P). View our protocol for [Staining Membrane-associated Proteins](#).

## PREPARATION AND STORAGE

<b>Shipping</b>	The product is shipped at ambient temperature. Upon receipt, store it immediately at the temperature recommended below.
<b>Stability &amp; Storage</b>	<b>Protect from light. Do not freeze.</b> <ul style="list-style-type: none"> <li>12 months from date of receipt, 2 to 8 °C as supplied.</li> </ul>

## BACKGROUND

The anti-Cetuximab antibody is an anti-Idiotypic antibody raised against and selected for the antigenic determinants of the variable region of Cetuximab. The antibody has been tested against a broad range of other biosimilars to ensure specificity. This highly specialized anti-idiotypic antibody can be used in a variety of pharmacokinetic (PK) assay formats.